



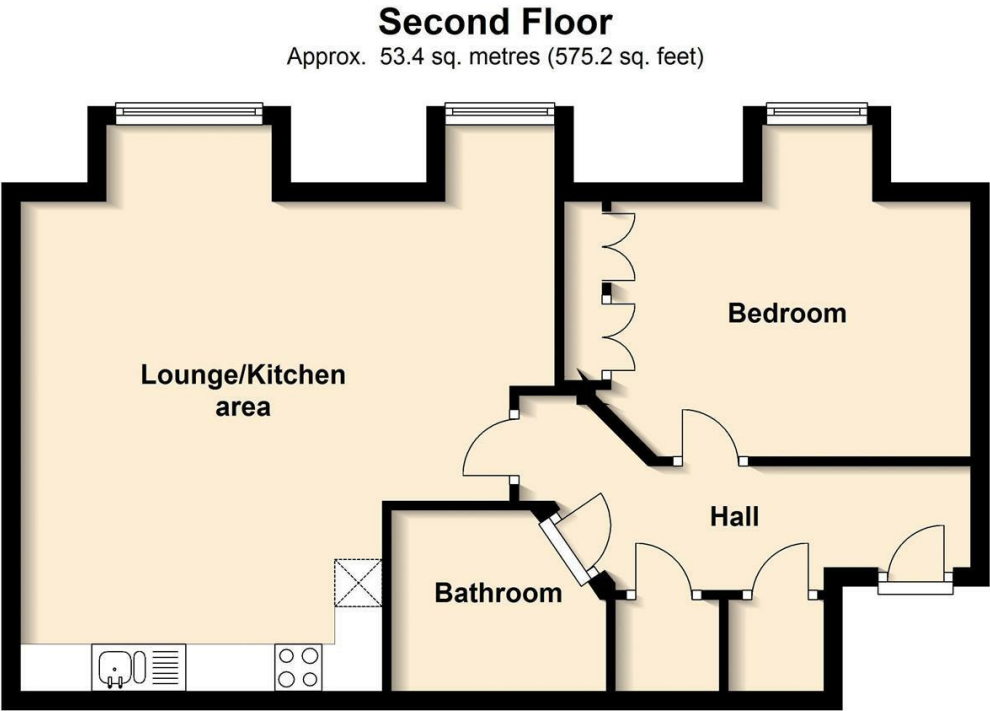


## 20 Victoria Mews St Judes Road, Englefield Green, TW20 0BF

This spacious top floor fully furnished Student apartment is situated in a much favoured development with views over the communal gardens to the rear. There is double glazing, gas central heating to radiators and allocated parking, as well as visitors' parking and a bike store. There is a double bedroom with fitted wardrobes, a lovely bathroom and a large lounge/contemporary fully fitted kitchen. 2 minutes' walk to Royal Holloway University. Energy rating C.



Floor Plan



Total area: approx. 53.4 sq. metres (575.2 sq. feet)



Features

- Top Floor Apartment
- Double Bedroom
- Big Lounge
- Close to University
- Lovely Bathroom
- Fully Fitted Kitchen



