



20 Queenswood Crescent, Englefield Green, TW20 0AT

£410,000

# 20 Queenswood Crescent, Englefield Green, TW20 0AT

**SHARE OF FREEHOLD:** We are delighted to present this stunning first-floor apartment, located within Chambord House in the highly sought-after Queenswood Crescent development, built in 2017 by renowned builders CALA Homes. Positioned directly opposite the beautiful Windsor Great Park, the property enjoys a truly exceptional setting.

Perfectly suited to dog walkers, cyclists, and nature lovers, Windsor Great Park provides miles of scenic walks and breath-taking surroundings, while still offering excellent convenience. Englefield Green village centre is less than half a mile away, with Egham town centre, shops, and mainline train station approximately 1.25 miles away.

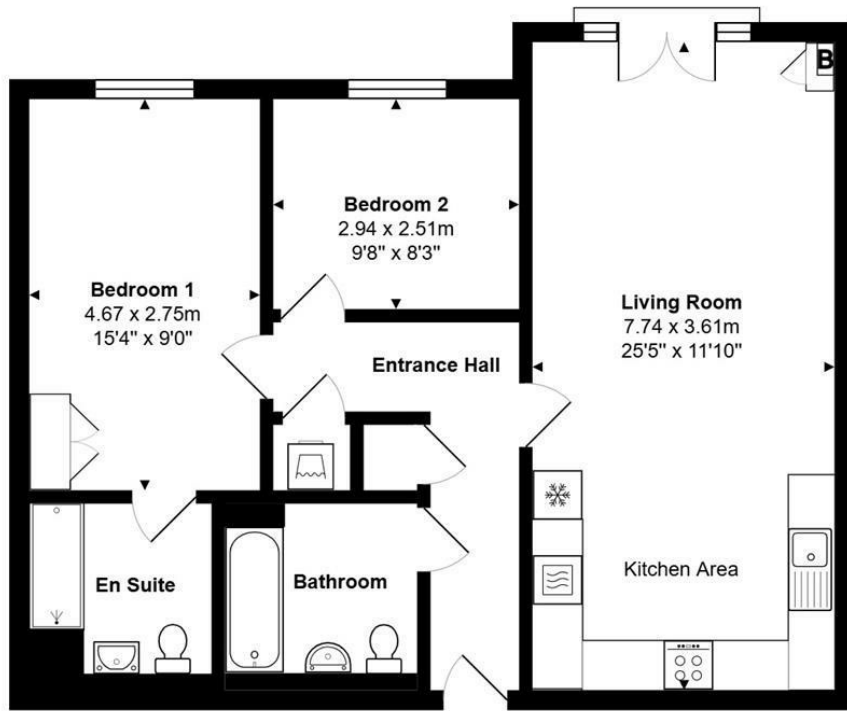
Accessed via lift or stairs, the apartment features a welcoming entrance hall with a useful utility cupboard including plumbing for a washing machine. The spacious open-plan lounge/dining area has a Juliette balcony overlooking gardens and woodland to the rear and flows seamlessly into a modern, well-appointed kitchen, creating an ideal space for both relaxing and entertaining.

There are two bedrooms, both with high-quality built-in storage, and the principal bedroom is further enhanced by a stylish en-suite shower room. A contemporary family bathroom completes the accommodation. The property also benefits from double glazing and gas central heating throughout.

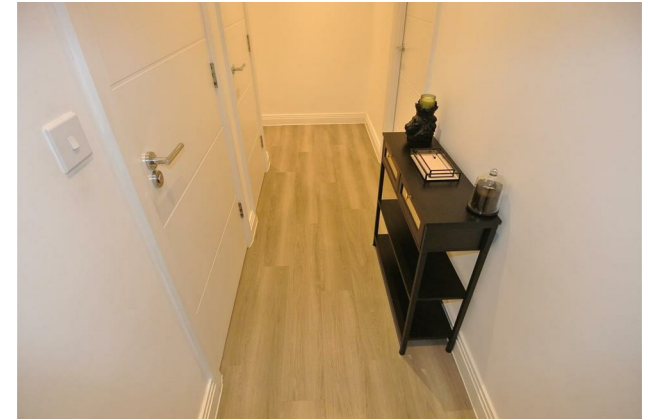
Externally, residents can enjoy beautifully maintained communal gardens, along with two allocated off-street parking spaces. A secure, communal bike store is also available. EPC Rating: B.



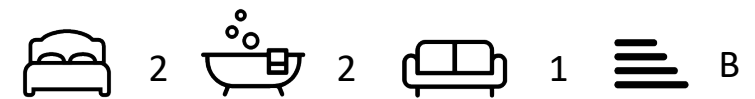
# Floor Plan



Total Area: 70.4 m<sup>2</sup> ... 757 ft<sup>2</sup>



## Features



Tenure - Share of Freehold Council Tax Band - D

