



5 Joviel House Garrick Close, Staines-upon-Thames, TW18 2PJ

£1,500 Per Calendar Month

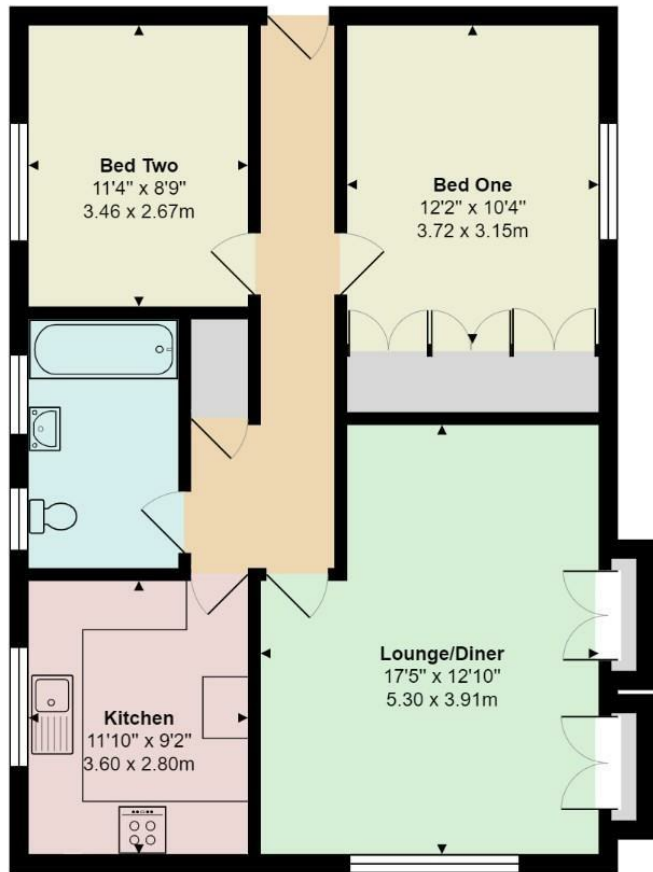


## 5 Joviel House Garrick Close, Staines-upon-Thames, TW18 2PJ

Located close to the River Thames and within walking distance of Staines Town Centre and Train Station. This larger than average first floor apartment has two double bedrooms, large lounge / diner with Juliet balcony and laminate flooring, modern bathroom, fitted kitchen and the apartment benefits from gas central heating. Available early May and is offered unfurnished, please call for further details and to arrange a viewing, early viewing is highly recommended. EPC Rating C.



Floor Plan



Features

- First Floor Apartment
- Modern Bathroom
- Gas Central Heating
- Good Condition Throughout
- Juliet Balcony
- Two Double Bedrooms
- Unfurnished
- Large Lounge/Diner
- Fitted Wardrobes
- Available Early May

