



9 The Lodge, St. Judes Close, Englefield Green, TW20 0DN

£290,000

9 The Lodge, St. Judes Close, Englefield Green, TW20 0DN

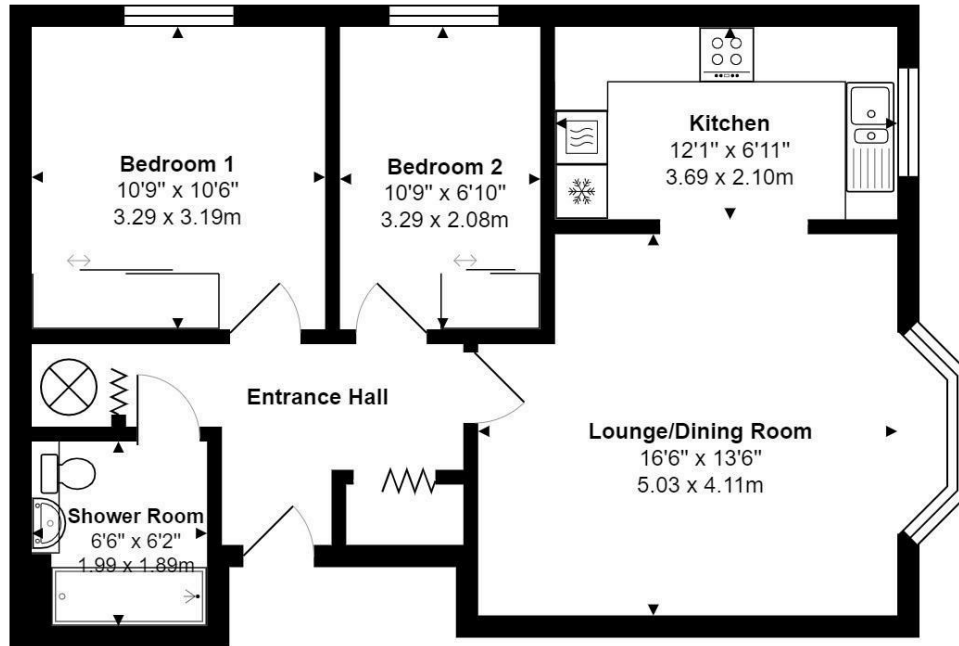
One of the best two bedroom retirement apartments we have seen, offered for sale in pristine condition with a modern shower room, fitted kitchen with dishwasher and other appliances, all situated in this lovely development of just 24 properties for the over 55's, so is ideal for those seeking peace & quiet, tucked away behind electric gates, yet within a 6-7 minute walk of the doctor's surgery & shops and a short stroll to the village green.

This property has the advantage of a good size lounge with bay window and a lovely outlook over the grounds to the rear. The lovely fitted kitchen is just off the lounge. Both bedrooms have fitted wardrobes, with the second bedroom currently being used as an office.

The communal gardens are an excellent size, with various seating areas and immaculately maintained. There is a visiting property manager who comes two afternoons a week and allocated parking as well as visitor spaces. There are no other communal facilities apart from the beautiful grounds. Service Charge: £241.55 per month Lease: 125 years from 1990. Ground Rent: £18.75 per quarter. EPC Rating: TBC but others tend to be a 'D'.



Floor Plan



Features

- Retirement apartment
- Lounge/Diner
- Modern Shower Room
- Timber Double Glazing
- Allocated Car Parking
- Two Bedrooms
- Fitted Kitchen
- Hallway with cupboards
- Electric Heating
- Beautiful Grounds

