





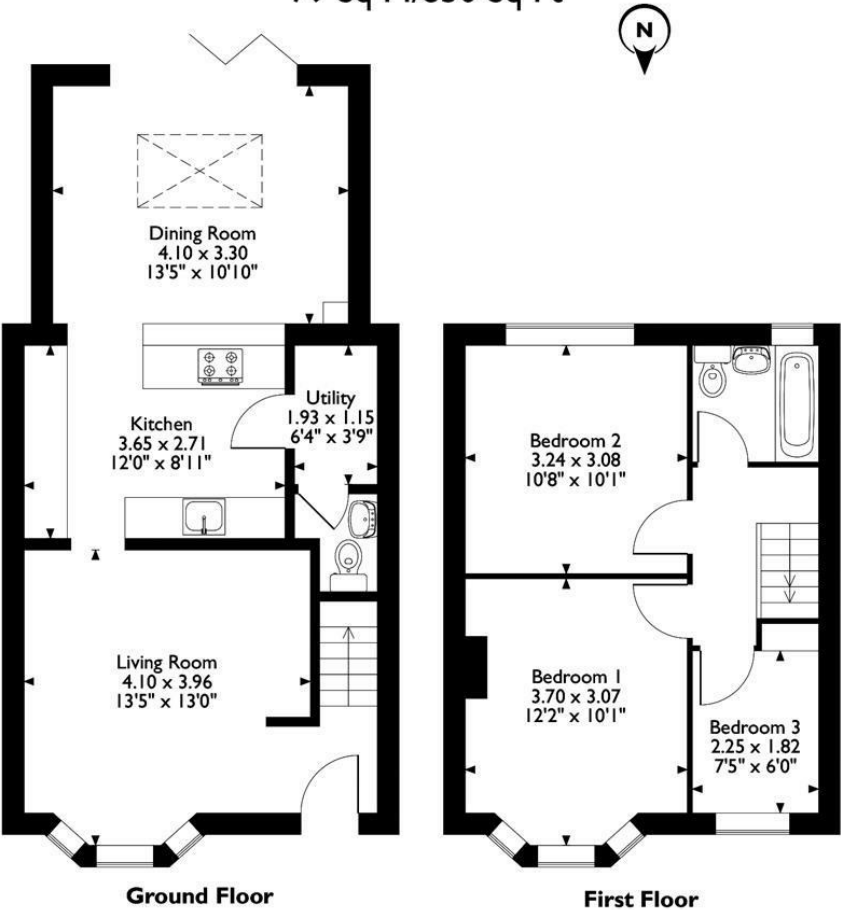
## 39 Laurel Avenue, Englefield Green, TW20 0QD

This stunning three bedroom property is located in a popular residential road within easy access to the Village Green and local shops. There is a lounge with cosy log burning stove, a kitchen/ Family room with underfloor heating, a sky lantern and Bifold doors on to a decked area in the south facing garden. Upstairs there are 2 double bedrooms and a single bedroom and modern bathroom. The property benefits further from a clever utility area off the kitchen with w.c., summer house and off road parking for 2 cars. EPC Rating E



Floor Plan

39 Laurel Avenue Englefield Green, Egham, Surrey  
Approximate Gross Internal Area  
79 Sq M/850 Sq Ft



Please note that the location of doors, windows and other items are approximate and this floorplan is to be used for illustrative purposes only. Unauthorized reproduction is prohibited.



Features



