



24 Englefield Close, Englefield Green, TW20 0SE

£1,450 PCM

24 Englefield Close, Englefield Green, TW20 0SE

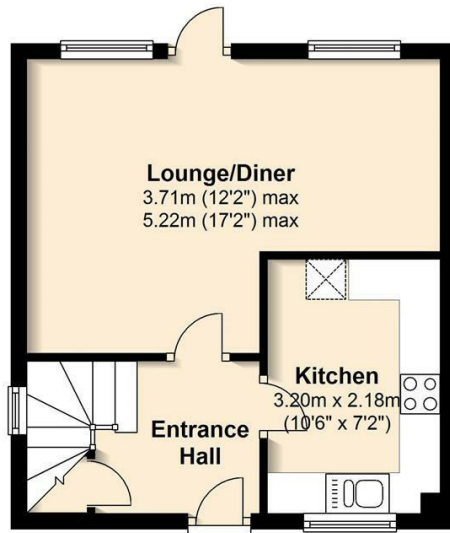
This 2 bedroom end of terrace house is situated in a small sought after development. The property benefits from allocated parking for 1 car as well as residents' parking on a first come first serve basis. The well laid out accommodation comprises an entrance hall, kitchen with white goods, good size lounge/diner with doors out to a southerly facing patio garden area, landing with window, two bedrooms and a bathroom. Available long term on an unfurnished basis. EPC Rating: D.



Floor Plan

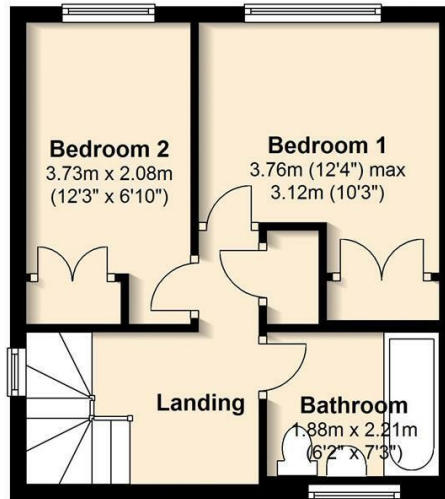
Ground Floor

Approx. 29.0 sq. metres (312.3 sq. feet)



First Floor

Approx. 28.7 sq. metres (309.4 sq. feet)



Total area: approx. 57.8 sq. metres (621.7 sq. feet)



Features

- 2 Bedroom House
- Separate Kitchen
- Upstairs Bathroom
- End of Terrace
- Lounge/Diner
- Enclosed Rear Garden

