



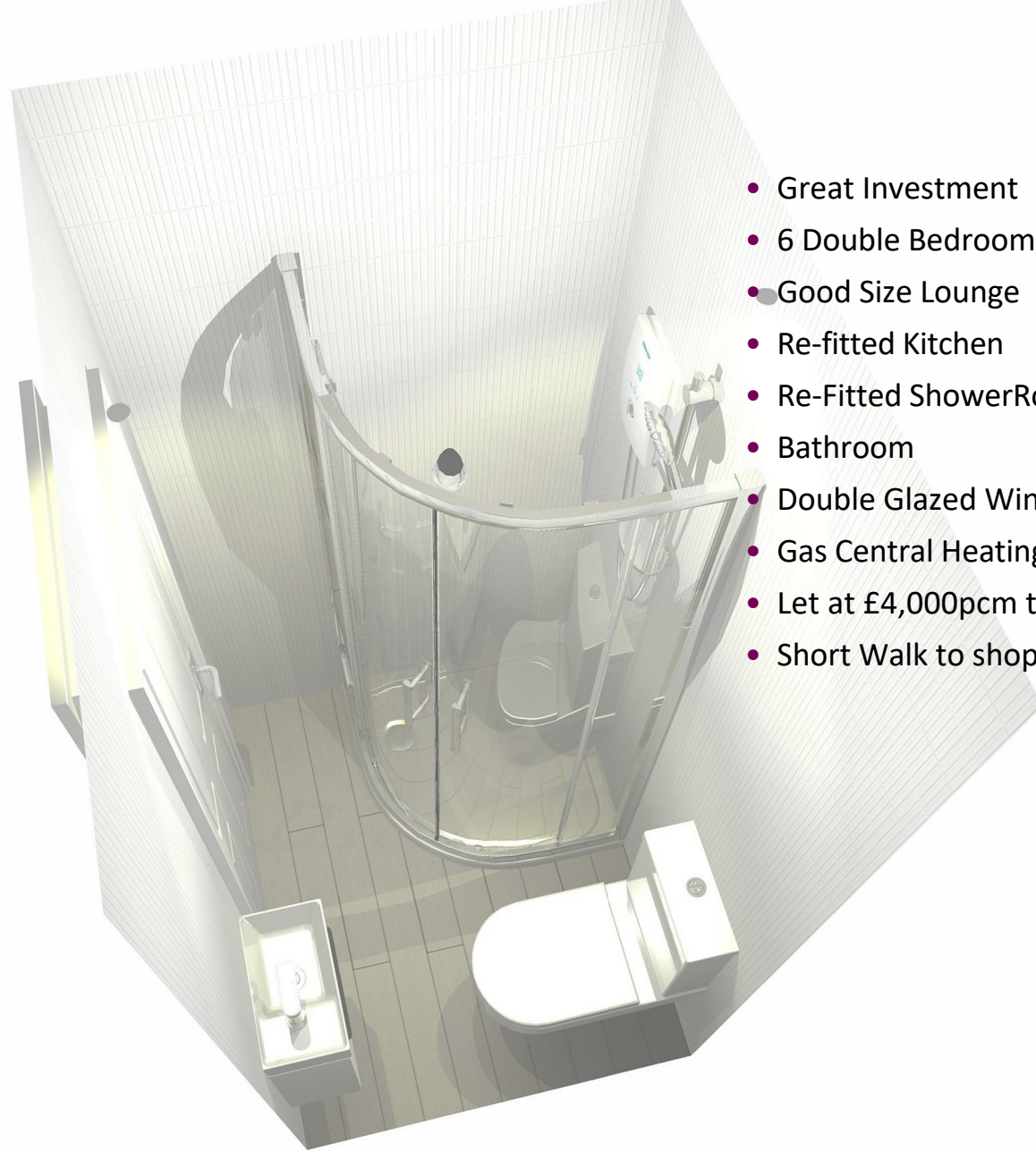
Aspen
estate agents



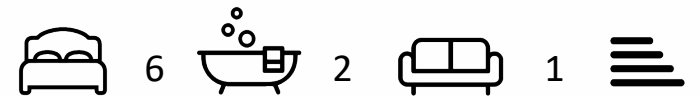
63 Clarence Street
Egham TW20 9QY
£595,000



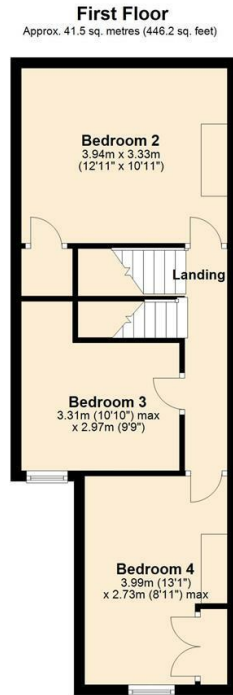
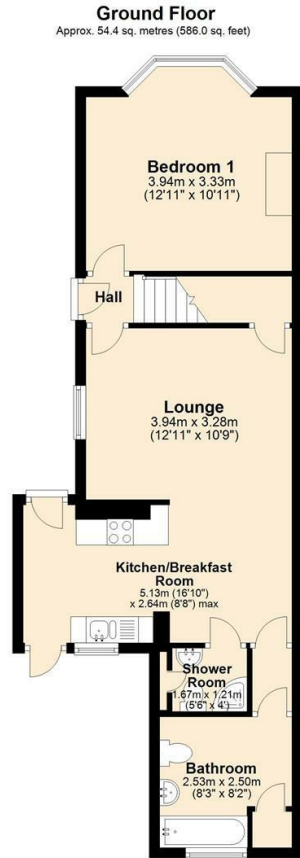
About



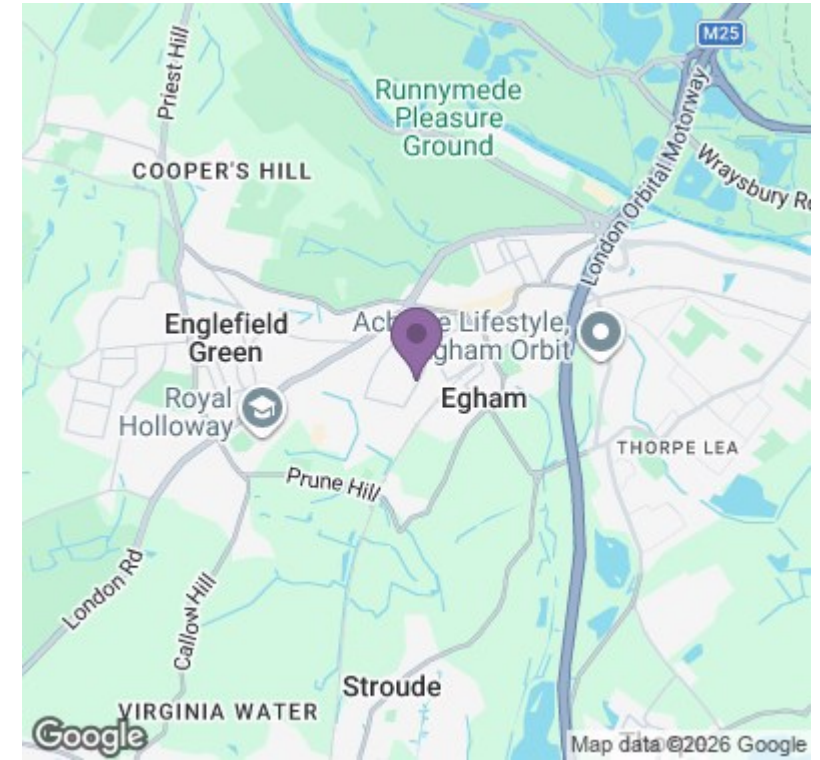
- Great Investment
- 6 Double Bedrooms
- Good Size Lounge
- Re-fitted Kitchen
- Re-Fitted ShowerRoom
- Bathroom
- Double Glazed Windows
- Gas Central Heating
- Let at £4,000pcm to 15/07/2027
- Short Walk to shops/station/Uni



Floor Plan



Area Map



Energy Efficiency Graph

