



60 St. Judes Road, Englefield Green, TW20 0BT

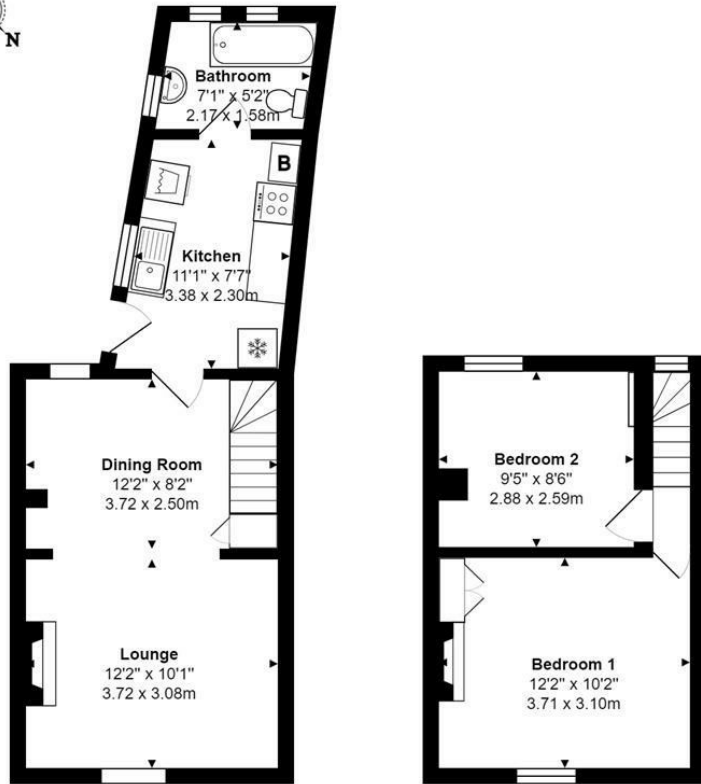
£1,275 Per Month

60 St. Judes Road, Englefield Green, TW20 0BT

This pretty two bedroom cottage dating from 1822 is located in the popular village of Englefield Green close to the local shops. The property has lots of character and period features including fireplaces, wood flooring, beams and doors. There is a lovely south facing garden, a good sized lounge/diner and two double bedrooms. The property also has the added benefit from off road parking for two cars. EPC Rating: E. Council Tax Band: D.



Floor Plan



Total Area: 583 ft² ... 54.2 m²



Features

