



32 Vegal Crescent, Egham, TW20 0QF

£1,350 PCM

32 Vegal Crescent, Egham, TW20 0QF

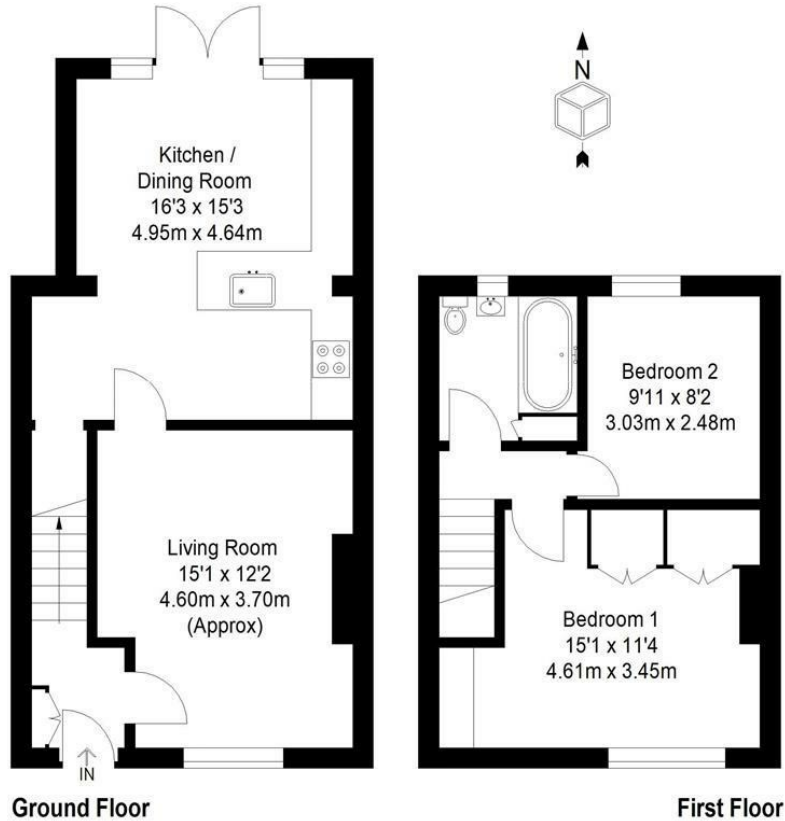
This house has been almost totally renovated over the last few years, to include a lovely dining room extension to the re-fitted kitchen giving a bright and airy space with windows and French doors onto the westerly aspect decking/garden area....ideal for social gatherings and entertaining. There is a lovely living room with gorgeous fireplace and an enlarged re-fitted bathroom with rainwater shower upstairs and two bedrooms. Other benefits include a dropped curb and off road parking, gas central heating system to radiators, double glazed windows, wood flooring downstairs and a superb westerly garden (please note the summerhouse in the photograph does not form part of the tenancy). Available on an unfurnished basis on a 12 month contract only. EPC Rating: C.



Floor Plan

32 Vegal Crescent, Englefield Green, TW20

Approximate Gross Internal Area
Ground Floor = 470 sq ft / 43.6 sq m
First Floor = 328 sq ft / 30.5 sq m
Total = 798 sq ft / 74.1 sq m



Cube Property Marketing © 2018
Illustration for identification purposes only,
measurements are approximate, not to scale.



Features

- Renovated/Refurbished House
- Re-Fitted Kitchen/Dining Room
- Gas Central Heating
- Good Size Garden
- Part-furnished (flexible)
- Living Room with Fireplace
- Re-Fitted Upstairs Bathroom
- Double Glazing
- Off Road Parking
- Professional/Family Let

