



11 Cypress Walk, Egham, TW20 0PA

£250,000

11 Cypress Walk, Egham, TW20 0PA

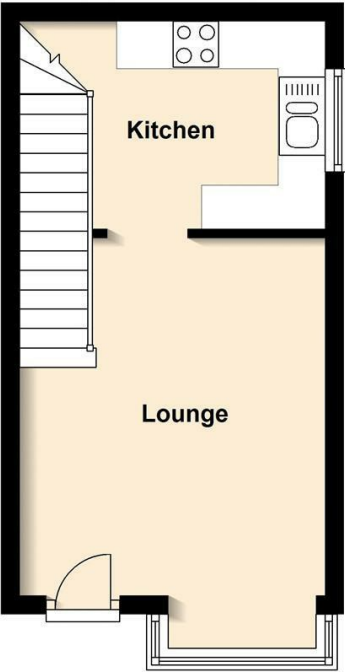
This one bedroom end of terrace starter home is situated in probably the best position of this very pleasant residential area with a large expanse of wrap around gardens. These gardens are in fact communal but offer a lovely outlook and give the feel of seclusion and privacy to the property. The accommodation comprises a living room with bay window overlooking the gardens, separate kitchen with fitted appliances, landing with access to the bathroom and the double bedroom, which has fitted wardrobes and again the views over the communal gardens. There house also benefits from double glazing and an allocated parking space, with additional visitor spaces available on a first come first serve basis. We understand there is a £25 per month charge to all owners for the upkeep of the communal gardens. Energy Rating E. No onward Chain.



Floor Plan

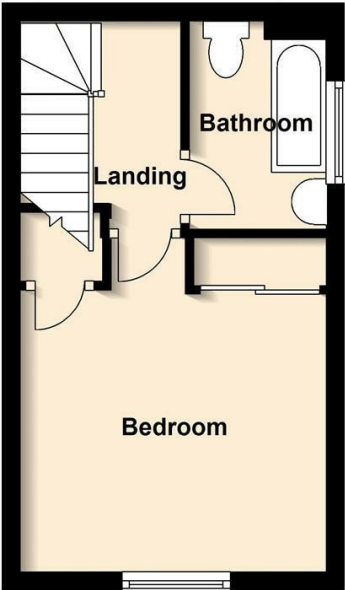
Ground Floor

Approx. 21.4 sq. metres (230.0 sq. feet)



First Floor

Approx. 19.5 sq. metres (209.8 sq. feet)



Features

Total area: approx. 40.9 sq. metres (439.8 sq. feet)

