



24 Victoria Mews, Englefield Green, TW20 0BF

£465,000

24 Victoria Mews, Englefield Green, TW20 0BF

This stunning 2 double bedroom house is superbly positioned for the village amenities, with the local shops just a 4-5 minute walk, as is one of the access points into Windsor Great Park and would be an ideal first time buy, downgrade or perhaps for a professor at Royal Holloway University, being just a 3-4 minute walk. It is certainly one of the highest quality properties we have and has benefited from much recently replaced flooring.

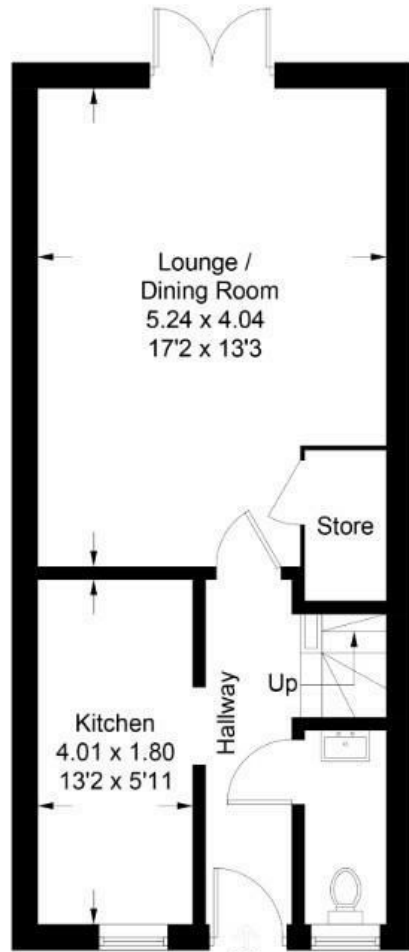
There is an entrance hall, downstairs toilet, lounge/dining room, separate kitchen with fitted appliances, landing, 2 bedrooms and bathroom upstairs. There is parking for one car, with further visitor spaces available on a first come first served basis and a South facing rear garden. No onward chain. The courtyard grounds are extremely well maintained for which there is a service charge of £228 twice a year. Energy Rating C.



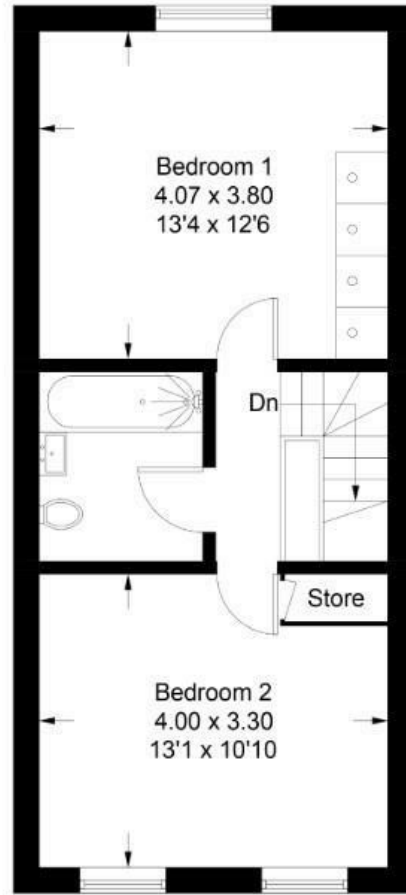
Floor Plan

Victoria Mews

Approximate Gross Internal Area = 78.9 sq m / 849 sq ft



Ground Floor



First Floor



Features

- Superb Property
- Downstairs Cloakroom
- Upstairs Bathroom
- Gas Central Heating
- Fitted Kitchen
- 4-5 minute walk to shops
- Lounge/Dining Room
- Sunny Rear Garden
- Double Glazing
- Allocated Parking

