



Flat 11, Burnell Court Kennett Lane, Chertsey, KT16 9FT

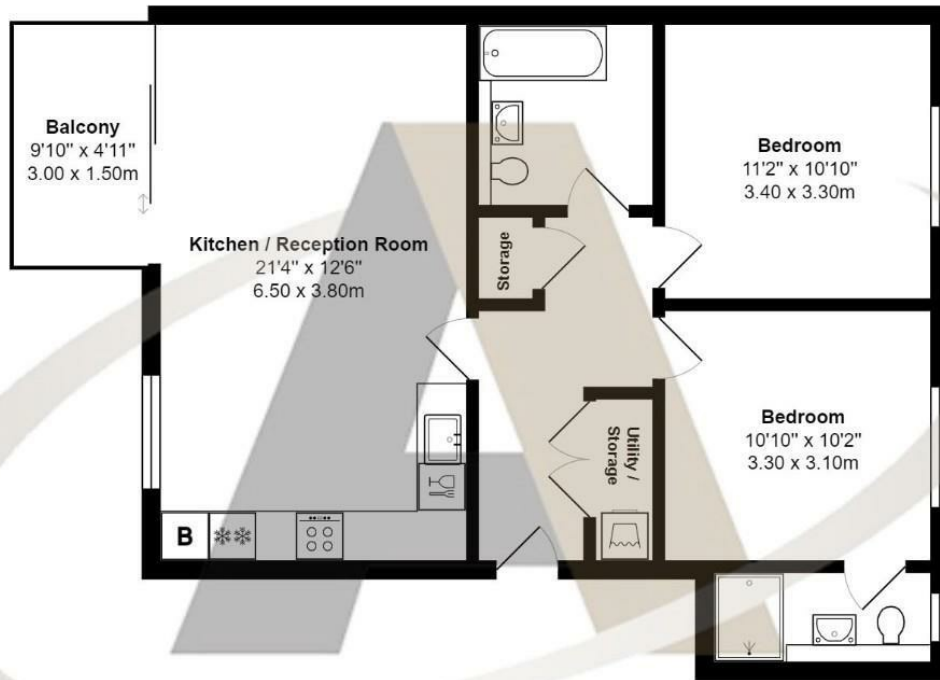
£1,550

Flat 11, Burnell Court Kennett Lane, Chertsey, KT16 9FT

Aspen Estate Agents are delighted to introduce this stunning two-bedroom, two-bathroom, first-floor apartment to the market. Just 3 years old and built to a high specification this property should be viewed to be fully appreciated. Accommodation comprises; large lounge / kitchen with integrated appliances, a modern family bathroom with a shower over the bath, two double bedrooms, both with built-in wardrobes and there is an en suite shower room to the primary bedroom. Other notable features include a good size balcony, utility cupboard, allocated parking, and large and well maintained communal grounds. Viewings are highly recommended and can be booked by calling Aspen Estate Agents.



Floor Plan



Burnell Court, Kennett Lane, Chertsey

Total Area: 783 ft² ... 72.7 m²

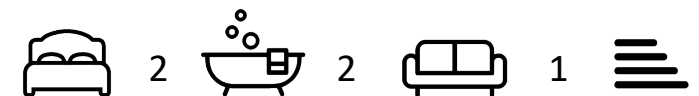
All measurements are approximate and for display purposes only



Features

- 2 Double Bedrooms
- En Suite to Primary Bedroom
- Large Lounge
- Allocated Parking
- Modern Apartment
- Family Bathroom
- Kitchen with integrated appliances
- Available 1/8/22

10 St Judes Road, Englefield Green, Surrey TW20 0BY
Tel 01784 433696
sales@aspenestateagents.co.uk



Tenure - Council Tax Band -

