



22 Lynwood Avenue, Egham, TW20 9RD

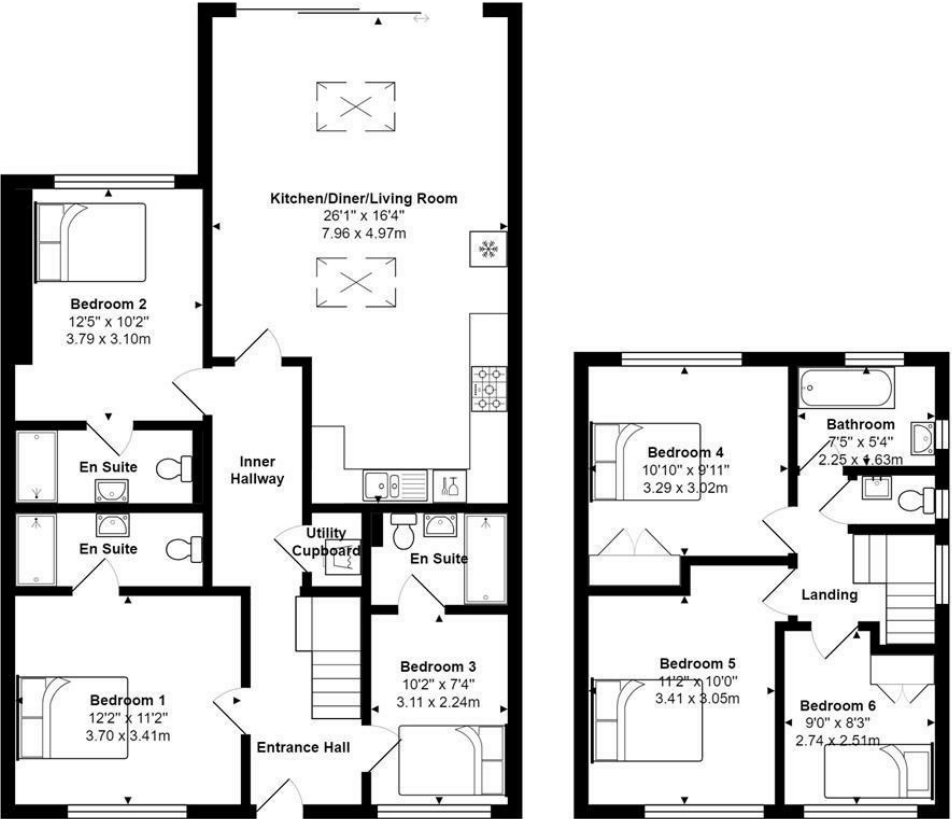
£5,000 Per Calendar Month

22 Lynwood Avenue, Egham, TW20 9RD

This will be the most amazing 6 bedroom 4 bathroom (3 en suite) student property, situated very close to the back gate of Royal Holloway University. It is just about to undergo an extensive extension/refurbishment programme to finish in time for a July 2026 start of term. Accommodation will comprise: entrance hall, huge fully fitted kitchen/breakfast/living room with roof lights and almost full-width doors onto the garden. There will be three en suite bedrooms downstairs, whilst upstairs will be a further three bedrooms (2 big one small) and a further bathroom/separate w.c. The windows will all be double glazed and there will be a gas central heating system to radiators, off road parking and good size garden, with gardener included. This will probably be the best 6 bedroom house in the market place and priced realistically for a group ready to commit.



Floor Plan



Total Area: 1460 ft² ... 135.7 m²



Features

10 St Judes Road, Englefield Green, Surrey TW20 0BY
Tel 01784 433696
sales@aspeneagents.co.uk



Tenure - Council Tax Band -

