



83 Rookwood Court, Guildford, GU2 4EL

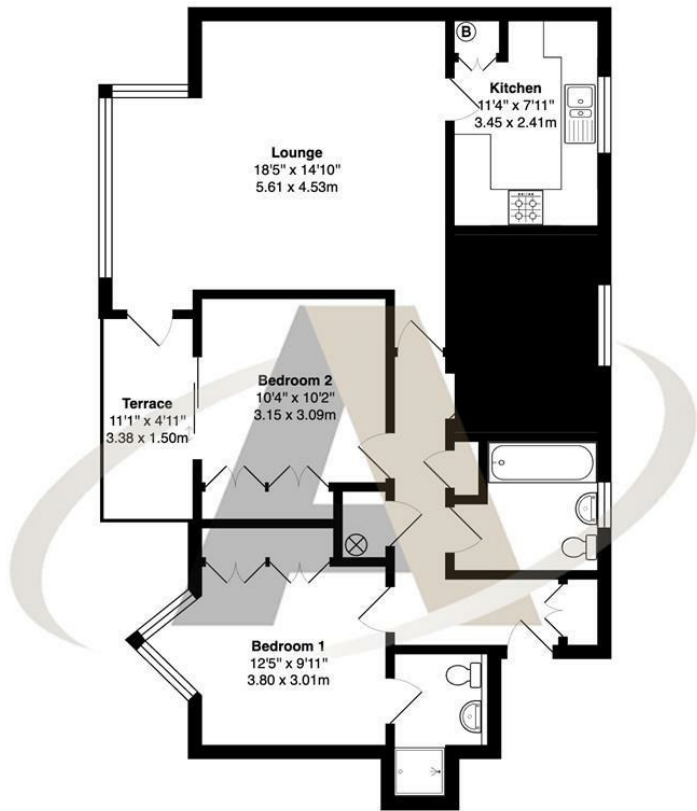
ALL BILLS INCLUDED!

This stunning two-bedroom, two-bathroom penthouse apartment in the sought-after Rookwood Court offers the perfect blend of luxury and convenience. Just a short walk from central Guildford, you'll enjoy easy access to a vibrant array of shops, entertainment, and excellent transport links. The spacious living room boasts plenty of natural light, leading out to a private balcony/terrace with breathtaking panoramic views over Guildford. The modern, fully fitted kitchen is separate from the lounge, creating an ideal layout for entertaining or relaxing in comfort.

Both double bedrooms are generously sized, with the primary bedroom featuring an en suite shower room while the second bathroom serves guests. The apartment benefits from gas central heating and ample storage space throughout. This is a rare opportunity to rent a prime penthouse property in one of Guildford's most desirable locations. Contact Aspen today to arrange a viewing and experience the stunning features and views of this beautiful home for yourself! ALL BILLS INCLUDED!



Floor Plan



83, Rookwood Court, Guildford

Total Area: 981 ft² ... 91.1 m²

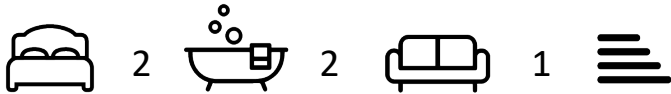
All measurements are approximate and for display purposes only



Features

- Stunning two-bedroom, two-bathroom penthouse in the desirable Rookwood Court.
- Prime location just a short walk from central Guildford's shops, entertainment, and transport links.
- Spacious living room with plenty of natural light and access to a private balcony/terrace with breathtaking views over Guildford.
- Fully fitted separate kitchen, ideal for both entertaining and relaxing.
- Generously sized double bedrooms, with the primary bedroom featuring an en suite shower room.
- All bills included, plus additional features like gas central heating and ample storage throughout.

10 St Judes Road, Englefield Green, Surrey TW20 0BY
Tel 01784 433696
sales@aspenestateagents.co.uk



Tenure - Council Tax Band -

