



Simmons Estates

EST: 1996



Bullhead Road, Borehamwood,

£295,000

- Two Double Bedroom Maisonette
- Large Living Room
- Fully Tiled Shower Room
- Loft Storage
- Great Location
- Two Minute Walk to YAVNEH COLLEGE
- Modern Kitchen
- Great Size Bedrooms
- 10 Minute Walk to Town Centre

A two double bedroom first floor maisonette located on the south side of Borehamwood just a 2 minute walk from Yavneh College. The property is in very good condition throughout with a fully tiled modern shower room, modern kitchen, great size lounge and ample storage (including loft).

Entrance Hall

UPVC frosted partly glazed security entrance door, carpeted stairs to first floor landing, UPVC double glazed window to the front above the front door

First Floor Landing

Laminate wood flooring, sockets, large storage cupboard housing Valiant combination boiler, doors leading to

Shower Room



Tiled flooring, fully tiled walls, UPVC double glazed frosted window to the side, fully tiled and enclosed shower cubicle with overhead rainfall shower head, temperature and power settings, heated towel rail, wash hand basin with mixer tap set in vanity unit, extractor, low flush WC.

Bedroom 2

10'1 x 9'6 (3.07m x 2.90m)



Laminate wood flooring, CH radiator, UPVC double glazed window to the rear, sockets.

Master Bedroom

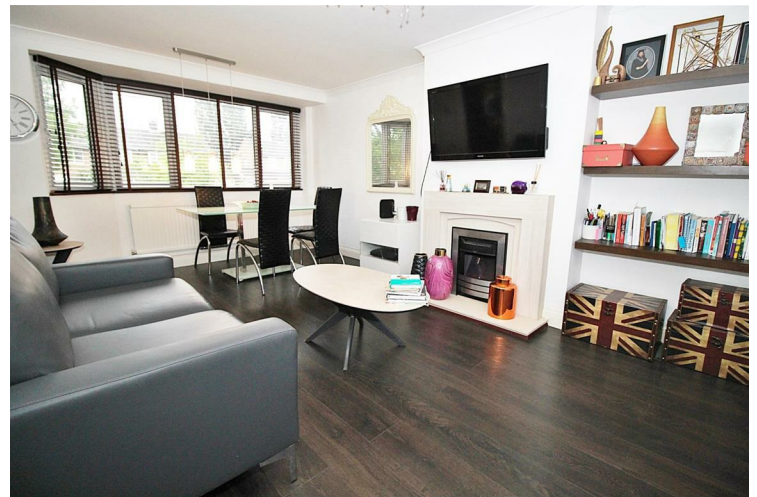
14' x 11'5 (4.27m x 3.48m)



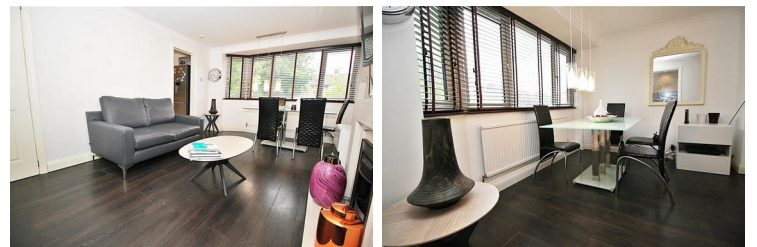
UPVC double glazed bay window to the front, laminate wood flooring, sockets, CH radiator, wallpapered feature wall.

Lounge/Dining Room

14'10 x 11'2 (4.52m x 3.40m)



Laminate wood flooring, UPVC double glazed bay window to the front, CH radiator, two light fittings, feature electric fireplace with stone surround, TV point, Virgin point, doorway through to



Kitchen

9'7 x 7'4 (2.92m x 2.24m)



UPVC double glazed window to the front, range of fitted units both wall mounted and base, sockets, partly tiled walls, integrated electric oven, four ring gas hob, extractor, space for washing machine, space for fridge/freezer, one and a half bowl sink unit with mixer tap, tiled wood effect flooring, spotlighting.

Front Garden

Laid to lawn with paved pathway.



