



36 Fairbanks Lodge, Borehamwood, Herts, WD6 2DQ

This second-floor, double-bedroom flat is located in the exclusive Fairbanks Lodge retirement development, designed for the over 60s with warden-controlled assistance.

The apartment includes a spacious double bedroom with fitted wardrobes, a large lounge, and a kitchen with built-in oven, electric hob, space for a fridge/freezer, and plumbing for a washing machine.

The shower room features a walk-in shower with a handrail, WC, and wash hand basin with a vanity unit. There's also a useful storage cupboard in the hallway.

Residents benefit from a range of communal facilities, including a large lounge with kitchen, hobby room, laundry room and One allocated parking space is included, with ample visitor parking.

The development offers additional amenities such as an on-site Lodge Manager, emergency Careline system, secure video entry, and regular events in the Owners' Lounge. There is also a Guest Suite for family and friends, and residents.

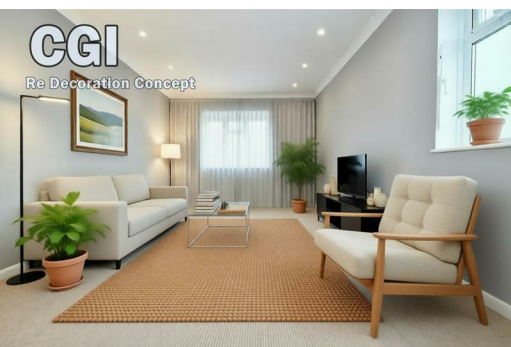
Fairbanks Lodge is ideally located just a 5-minute walk from Borehamwood's High Street and shopping centre, with excellent transport links to London and nearby motorways.

With 24-hour Careline monitoring, intruder alarms, and fire and smoke detection systems, the development ensures safety, security, and peace of mind.

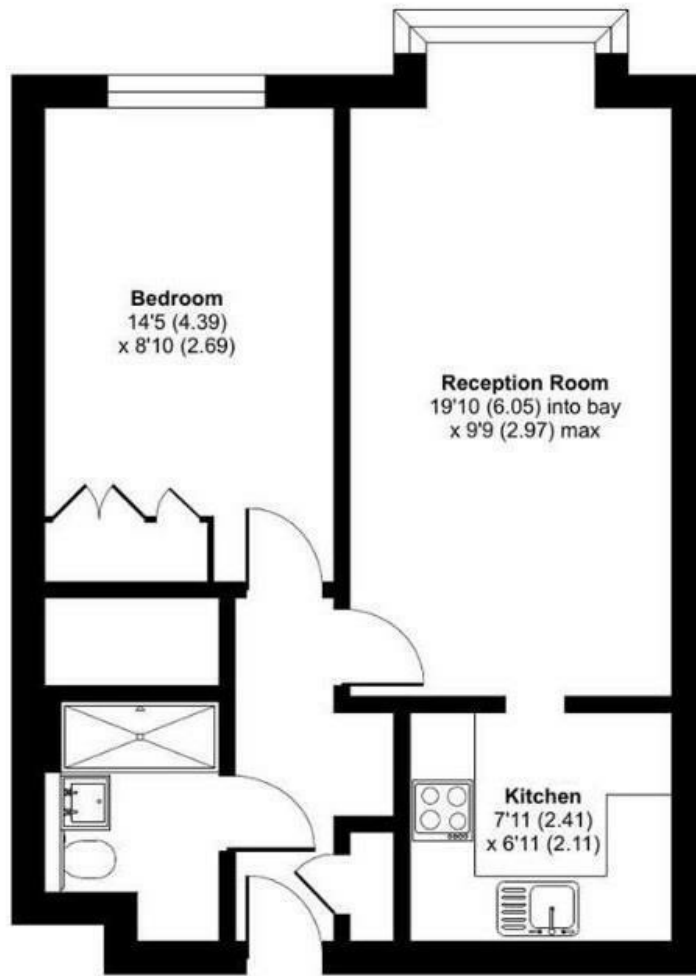
- One Double Bedroom
- Spacious Living/Dining Room
- Close To The Town Centre And Transport Links
- Chain Free
- Second Floor (Lift Access)
- Residents Lounge, Laundry Room & Guest Suite
- On Site Parking
- Over 60's Retirement Flat
- House Manager & 24 Hour Emergency Call System
- Long Lease (152 years Remaining)


£160,000

36 Fairbanks Lodge, Borehamwood, Herts, WD6 2DQ







Energy Efficiency Rating		Current	Potential
Very energy efficient - lower running costs			
(92 plus) A			
(81-91) B			
(69-80) C			
(55-68) D			
(39-54) E			
(21-38) F			
(1-20) G			
Not energy efficient - higher running costs			
		82	84
England & Wales		EU Directive 2002/91/EC 	

Environmental Impact (CO ₂) Rating		Current	Potential
Very environmentally friendly - lower CO ₂ emissions			
(92 plus) A			
(81-91) B			
(69-80) C			
(55-68) D			
(39-54) E			
(21-38) F			
(1-20) G			
Not environmentally friendly - higher CO ₂ emissions			
England & Wales		EU Directive 2002/91/EC 