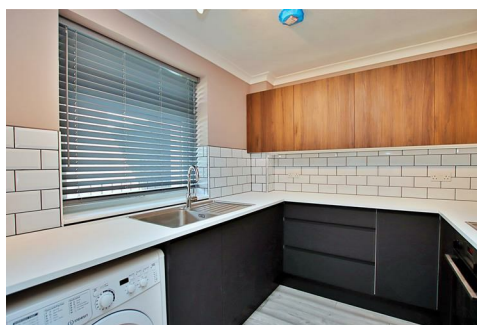




Simmons Estates

EST: 1996



Red Road, Borehamwood,

£1,700 PCM

- Two Bedrooms
- New Bathroom
- New Flooring
- Balcony
- Second Floor Apartment
- New Kitchen
- Newly Decorated
- 0.4 miles from Elstree & Borehamwood train station

A beautifully refurbished two-bedroom flat, situated on the second floor of a well-maintained residential block in the ever-popular Red Road. This thoughtfully updated home offers a fresh, contemporary finish throughout and combines comfort with functionality, making it ideal for modern-day living.

Upon entering, you're welcomed by a light and airy hallway that leads seamlessly into each room. Both double bedrooms are generously proportioned. The newly fitted kitchen is partially open to the living area, offering a seamless flow of space and designed to meet all culinary needs with ease, while the brand-new bathroom showcases a sleek and contemporary finish.

The bright reception room opens out onto a private balcony. Throughout the property, new flooring and full redecoration bring a sense of elegance and cohesion, creating a truly move-in ready home.

Located just 0.4 miles from Elstree & Borehamwood Train Station, the property is exceptionally well connected, with excellent transport links into Central London. Local shops, restaurants, parks, and entertainment options are all within easy reach, making this a prime choice for those seeking both comfort and convenience.

