



Simmons Estates

EST: 1996



Elstree House, Borehamwood,

£270,000

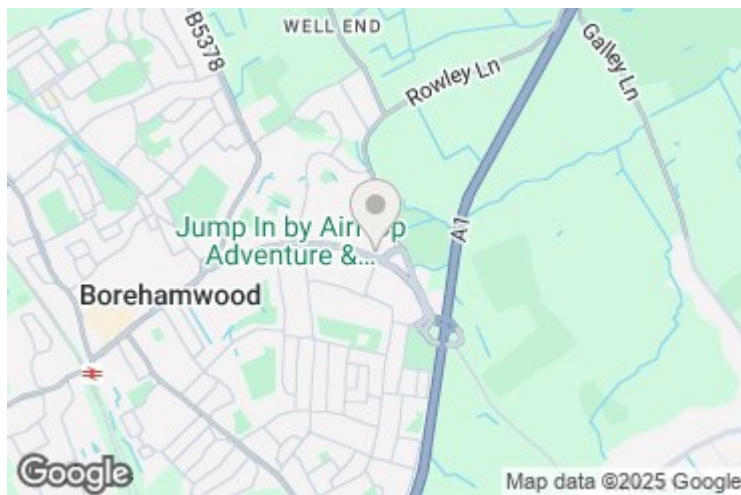
- One Bedroom Apartment
- Allocated Parking in Secured Car Park
- Great Size Open Plan Kitchen/Living Room
- Fifth Floor with Lift Access
- Immaculately Presented Throughout
- Large Balcony with Bi-Folding Doors
- Use of The Residents Gym & Concierge
- Very Bright & Airy Apartment
- Modern Fully Tiled Bathroom
- Bespoke Fitted Wardrobes

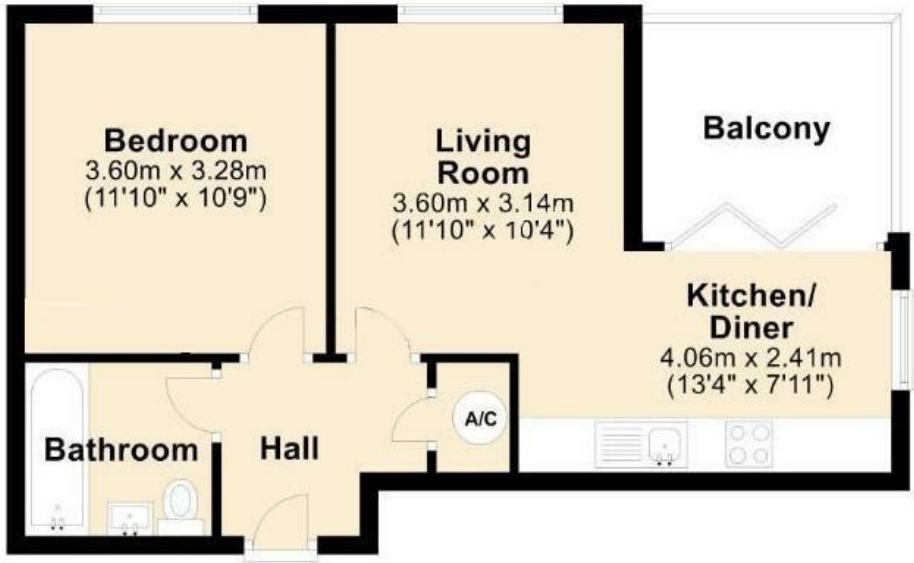
An immaculately presented one-bedroom first floor apartment, offering stylish and modern living within a popular and well-maintained development. Finished to a high standard throughout, this beautifully designed home is ideal for first-time buyers, downsizers, or investors seeking convenience, comfort, and quality.

The property comprises a spacious double bedroom complete with bespoke fitted wardrobes, and a contemporary fully tiled bathroom featuring a shower over the bath and luxurious porcelain finishes. The open-plan living area includes a sleek high-gloss kitchen with integrated appliances such as a washing machine, dishwasher, oven, and hob, as well as space for a fridge freezer. The bright and airy lounge benefits from bi-folding doors that open onto a generous private balcony, providing a tranquil outdoor space perfect for relaxing or entertaining.

Additional features include engineered oak flooring, oak internal doors, double glazing throughout, and a secure video entry system. The apartment also benefits from a concierge service, offering added convenience for parcel collection and visitor management, as well as comprehensive CCTV coverage for peace of mind. Residents have exclusive access to a fully equipped on-site gym, enhancing the lifestyle offering of this impressive home.

Externally, the development boasts well-maintained communal grounds, gated allocated parking, and additional visitor parking. Situated approximately one mile from Borehamwood & Elstree Thameslink station and within easy reach of major transport links including the A1, M1, M25, and local bus routes, the location provides excellent connectivity for commuters.





For illustration purposes only - not to scale

