



Simmons Estates

EST: 1996



Hackney Close, Borehamwood,

£400,000

- Three Bedrooms
- Kitchen Breakfast Room
- Within Easy Reach Of The A1
- Large Reception Room
- Chain Free
- Terraced House
- South Side Of Borehamwood
- Short Walk To local shops, local transport & schools
- Off Street Parking

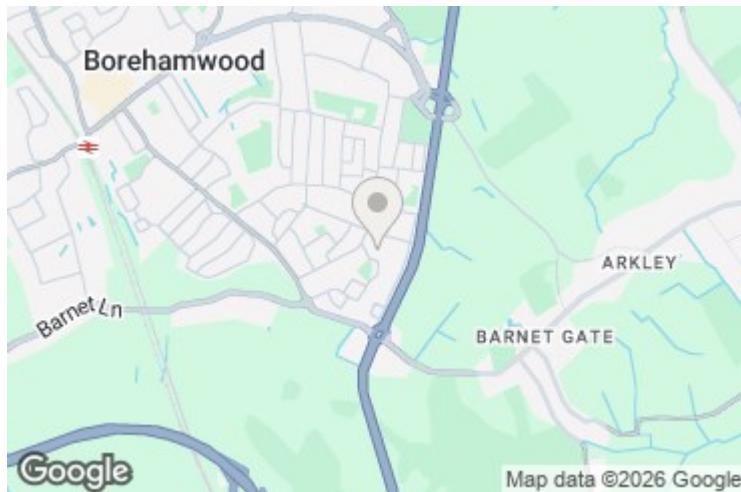
Located on the sought-after south side of Borehamwood, this very spacious three-bedroom terraced home offers the perfect blend of comfort, convenience, and practicality — ideal for families, first-time buyers, or investors alike.

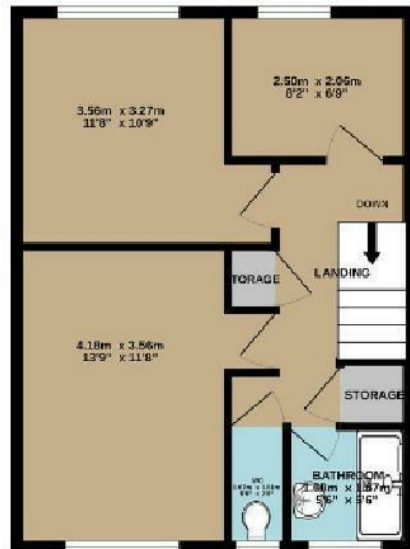
The property features a generous kitchen/breakfast room, a bright and airy reception room, and a private rear garden, providing excellent space for both relaxing and entertaining. All three bedrooms are well-proportioned, and the home is presented in good condition throughout.

Further benefits include off-street parking and a peaceful yet well-connected location, just a short walk from local shops, transport links, and highly regarded schools. With easy access to the A1, this home is perfectly positioned for commuters.

This is a fantastic opportunity to secure a spacious property in a desirable location — early viewing is highly recommended.

Please note: This property is owned by an associate of Simmons Estates.





TOTAL FLOOR AREA: 81.0 sq.m. (872 sq.ft.) approx.

While every effort has been made to ensure the accuracy of the description contained herein, the measurements of doors, windows, rooms and any other items are approximate and we accept no liability for any error, omission or mis-statement. This plan is for illustrative purposes only and should be used as such by any prospective purchaser. The services, appliances and appliances shown herein are shown based on our purchase as to their operability, as efficiency can be given.
Made with Floorplan 10003

