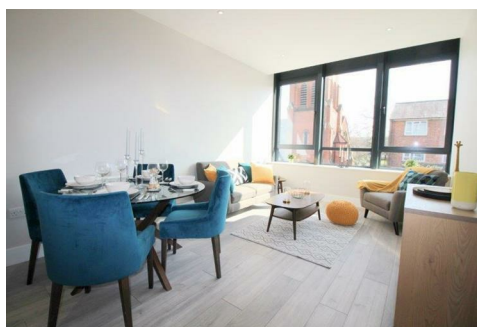




# Simmons Estates

EST: 1996



**Shenley Road, Borehamwood,**

**£1,300 PCM**

- Luxury One Double Bedroom Apartment
- Nearly 590 Sqft
- Integrated Appliances
- Above Commercial Premises
- Close To Station
- Large Open Plan Living Area
- Fully Tiled Bathroom
- Modern electric heating
- Long Lease (249 Years)
- High Street Entrance

This modern one-bedroom apartment situated in this one year old development, above commercial premises in the heart of Borehamwood High Street. It's ideally positioned within a short walk to the Borehamwood & Elstree mainline station, offering easy access to St Pancras. Built to a high standard, the apartment features a well-sized double bedroom, a luxurious fully tiled bathroom, and a spacious living area with an open-plan fitted kitchen complete with integrated appliances. The property benefits from modern electric heating throughout and has a private High Street entrance with a security video door entry system.



