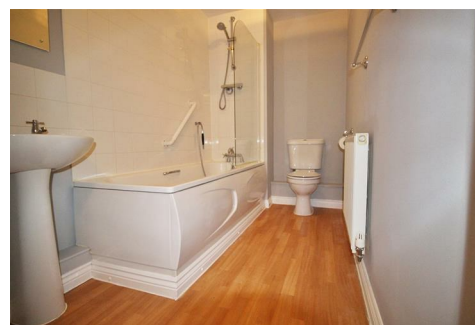




Simmons Estates

EST: 1996



Bennington Drive, Borehamwood,

£1,100 PCM

- One double bedroom
- Modern development
- Close to London bus links
- Close to shops
- Large living room
- Allocated parking
- Double glazing
- Very good condition

A one double bedroom ground floor apartment that is situated in a modern development that is just a short walk from London bus links and local shops. offered in great condition, with a large lounge, double bedroom and allocated parking.

Entrance Hall

Lounge

16'10 x 13'5 (5.13m x 4.09m)

Kitchen

10' x 5'2 (3.05m x 1.57m)

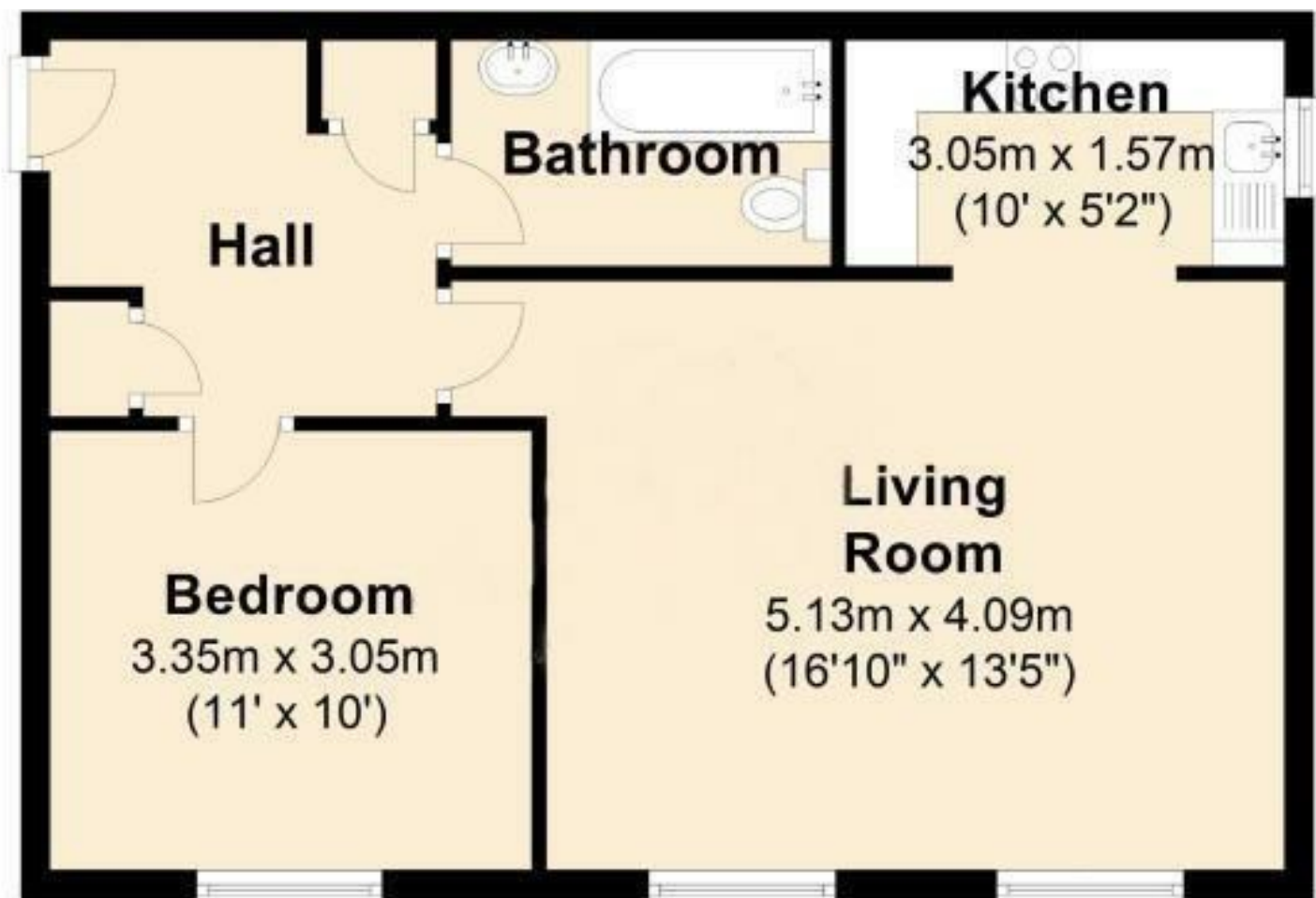
Bedroom

11' x 10' (3.35m x 3.05m)

Bathroom

Exterior





Total area: approx. 49.4 sq. metres (531.5 sq. feet)
For illustration purposes only - not to scale

Energy Efficiency Rating		
	Current	Potential
Very energy efficient - lower running costs		
(92 plus) A		
(81-91) B		
(69-80) C		
(55-68) D		
(39-54) E		
(21-38) F		
(1-20) G		
Not energy efficient - higher running costs		
	79	80
England & Wales		
EU Directive 2002/91/EC		

Environmental Impact (CO ₂) Rating		
	Current	Potential
Very environmentally friendly - lower CO ₂ emissions		
(92 plus) A		
(81-91) B		
(69-80) C		
(55-68) D		
(39-54) E		
(21-38) F		
(1-20) G		
Not environmentally friendly - higher CO ₂ emissions		
	84	85
England & Wales		
EU Directive 2002/91/EC		