



Simmons Estates

EST: 1996



Almond Way, Borehamwood,

£2,100 PCM

- Three Bedroom House
- Kitchen/Diner
- Fitted Wardrobes In Bedroom One & Two
- Fully Tiled Bathroom
- Quiet Cul-de-sac
- Large Open Reception Room
- Downstairs W/C
- South Side Of Borehamwood
- Within A 5-Minute Walk to Town & Station

This well-presented three-bedroom house is located in a quiet cul-de-sac on the south side of Borehamwood. The accommodation comprises three bedrooms, a family bathroom, a through lounge, a kitchen/diner, and a downstairs guest WC.

The property is ideally situated close to Yavneh, Monksmead and Summerswood schools, with the town centre and train station just a short walk away. Additional features include a private garden.



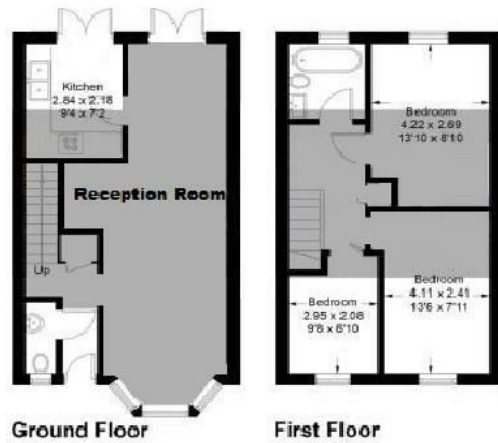


Illustration for identification purposes only; measurements are approximate, not to scale. floorplans4sketch.com © (D666062)

Energy Efficiency Rating		Current	Potential
Very energy efficient - lower running costs			
(92 plus) A			<div style="text-align: center;"> 73 </div>
(81-91) B			
(69-80) C			
(55-68) D			
(39-54) E			
(21-38) F			
(1-20) G			
Not energy efficient - higher running costs			
England & Wales		EU Directive 2002/91/EC	

Environmental Impact (CO ₂) Rating		Current	Potential
Very environmentally friendly - lower CO ₂ emissions			
(92 plus) A			
(81-91) B			
(69-80) C			
(55-68) D			
(39-54) E			
(21-38) F			
(1-20) G			
Not environmentally friendly - higher CO ₂ emissions			
England & Wales		EU Directive 2002/91/EC	