



HYDE PARK AGENCIES

ESTATE AGENTS · VALUERS · PROPERTY CONSULTANTS

Hatherley Court, Hatherley Grove, London



£1,900

Large, bright one bedroom flat located in Hatherley Court which is in the heart of , Bayswater, W2. Set in purpose built block with concierge. Located on the sixth floor with lift access this property has a large living room, separate kitchen, large double bedroom with generous storage and a full bathroom.

Perfectly located being a stones throw away from public transport access and all the shops and restaurants the area has to offer.

Furnished.

EPC Rating - D

Council Tax Band - C

Available Now.

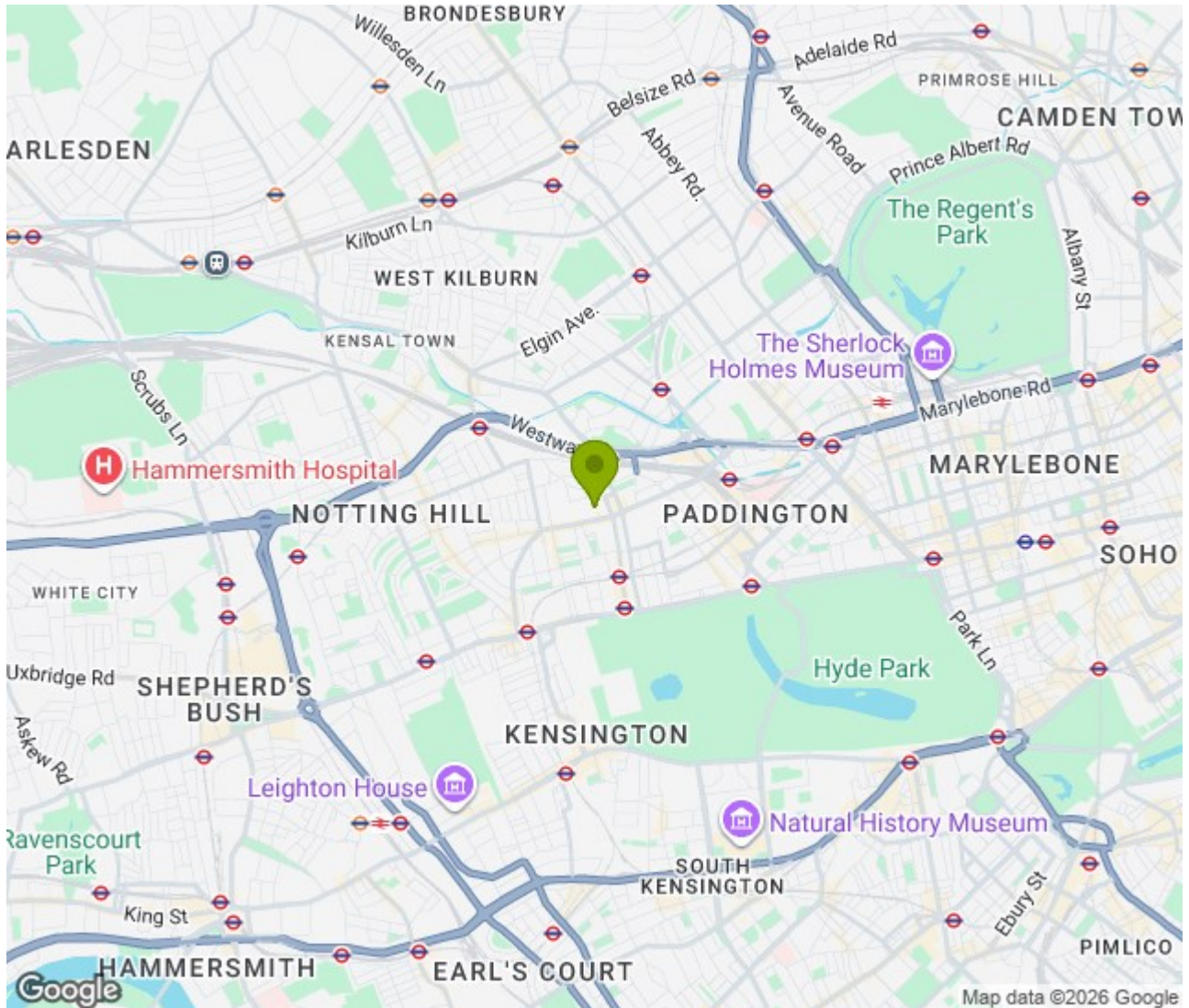
94 Queensway, London W2 3RR
T: +44 207 229 4495 E: info@hydeparkagencies.com

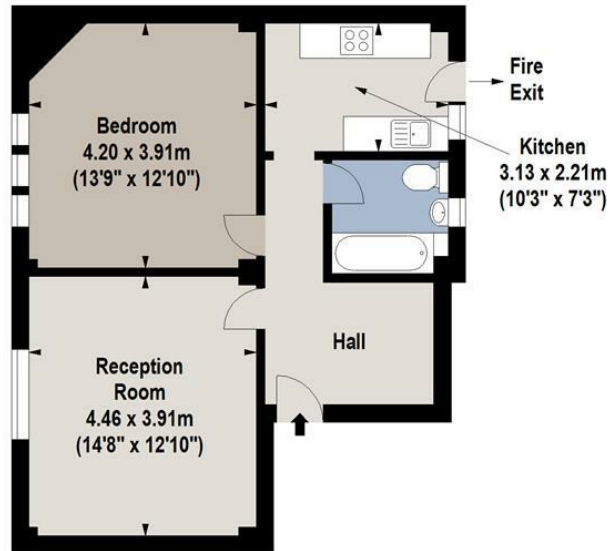
www.hydeparkagencies.com





Location: , London





Fifth Floor



For Identification Purposes Only. Not To Scale. © www.totalvista.uk 2025

Hatherley Court,
Hatherley Grove, W2

Approx. Gross Internal Area
54.72 Sq M - 589 Sq Ft



Energy Efficiency Rating

	Current	Potential
Very energy efficient - lower running costs		
(92 plus) A		
(81-91) B		
(69-80) C		
(55-68) D		
(39-54) E		
(21-38) F		
(1-20) G		
Not energy efficient - higher running costs		
	68	80
England & Wales	EU Directive 2002/91/EC	

Environmental Impact (CO₂) Rating

	Current	Potential
Very environmentally friendly - lower CO ₂ emissions		
(92 plus) A		
(81-91) B		
(69-80) C		
(55-68) D		
(39-54) E		
(21-38) F		
(1-20) G		
Not environmentally friendly - higher CO ₂ emissions		
England & Wales	EU Directive 2002/91/EC	