



HYDE PARK AGENCIES

ESTATE AGENTS · VALUERS · PROPERTY CONSULTANTS

Flat 21, 10 Orsett Terrace London

1 Bedroom Flat - Conversion



£2,350 Per Month

AVAILABLE 15 JUNE 2026.

Spacious bright 1 bedroom flat set in elegant period conversion on 2nd floor (with lift), live-in concierge.

Large reception with open plan kitchen, spacious bedroom and modern bathroom.

Short walk to the shops, cafes and restaurants of both Westbourne Grove and Paddington.

The property is conveniently located close to Paddington Station (Heathrow Express, Elizabeth Line), Royal Oak and numerous bus routes.

Council Tax Band D

EPC Rating D

VIDEO TOUR: <https://vimeo.com/1101921689?share=copy#t=163.921>

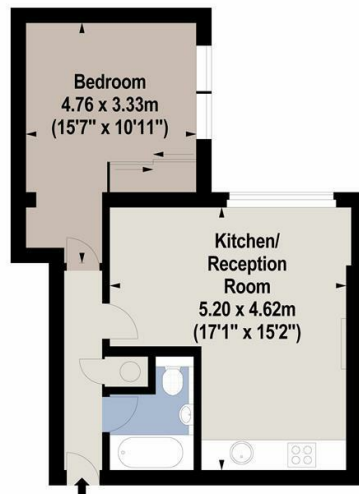
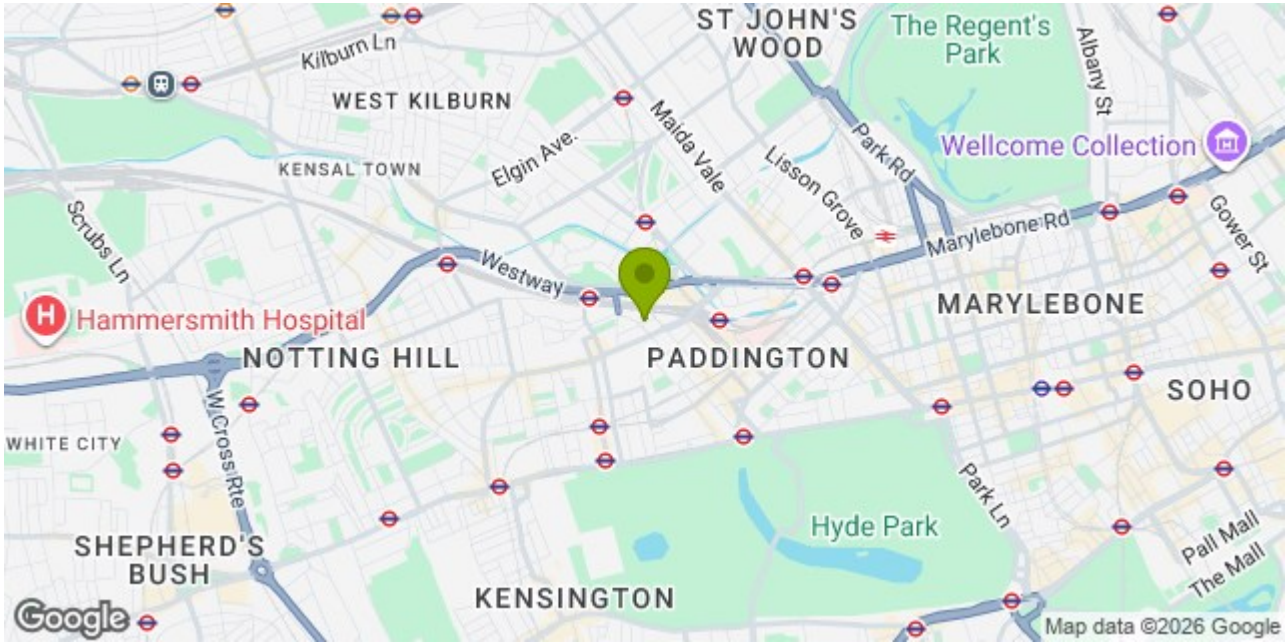
94 Queensway, London W2 3RR
T: +44 207 229 4495 E: info@hydeparkagencies.com

www.hyeparkagencies.com





Location: , London



Second Floor



For Identification Purposes Only. Not To Scale. © www.totalvista.uk 2025

Orsett Terrace, W2

Approx. Gross Internal Area
42.08 Sq M - 453 Sq Ft





Energy Efficiency Rating		
	Current	Potential
<i>Very energy efficient - lower running costs</i>		
(92 plus) A		82
(81-91) B		
(69-80) C		
(55-68) D	67	
(39-54) E		
(21-38) F		
(1-20) G		
<i>Not energy efficient - higher running costs</i>		
England & Wales	EU Directive 2002/91/EC	

Environmental Impact (CO ₂) Rating		
	Current	Potential
<i>Very environmentally friendly - lower CO2 emissions</i>		
(92 plus) A		
(81-91) B		
(69-80) C		
(55-68) D		
(39-54) E		
(21-38) F		
(1-20) G		
<i>Not environmentally friendly - higher CO2 emissions</i>		
England & Wales	EU Directive 2002/91/EC	