



HYDE PARK AGENCIES

ESTATE AGENTS · VALUERS · PROPERTY CONSULTANTS

Kensington Gardens Square, London, W2



£1,600 Per Month

Rarely available double volume studio set on the ground floor in an elegant period conversion located in Kensington Gardens Square, close to the amenities of both Bayswater/Queensway and Notting Hill/Westbourne Grove.

Generous living space with modern king size wall bed, separate kitchen, shower room, utility area, and generous space on mezzanine level.

Furnished.
No bills included.

Transport: Bayswater, Queensway and Royal Oak tube stations and numerous bus routes.

EPC Rating D
Council Tax Band: A

Available 23 April 2025

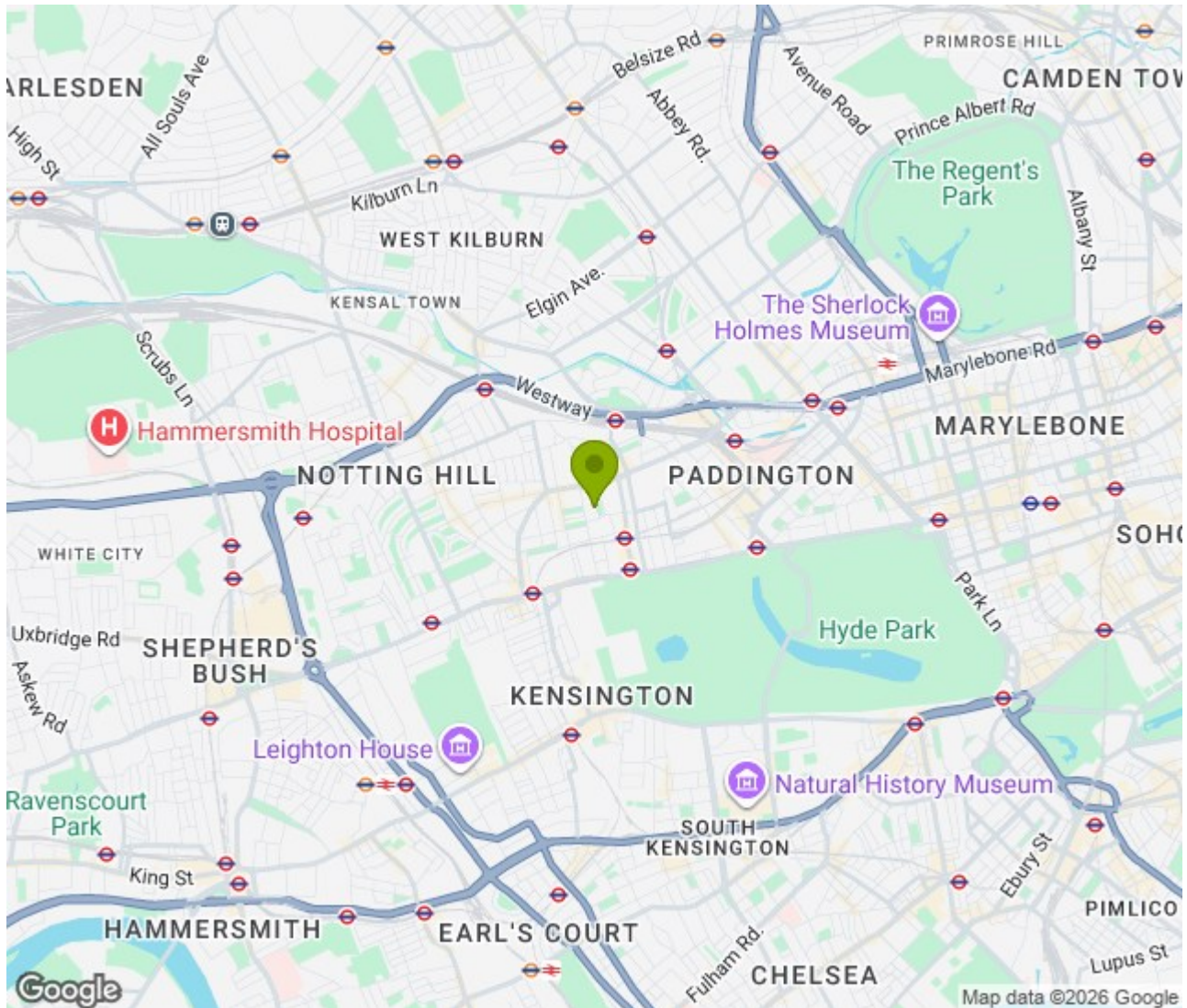
94 Queensway, London W2 3RR
T: +44 207 229 4495 E: info@hydeparkagencies.com

www.hydeparkagencies.com





Location: , London





Clifford Court, W2

Approx. Gross Internal Area *
305 Sq Ft - 28.34 Sq M
(Including Mezzanine)

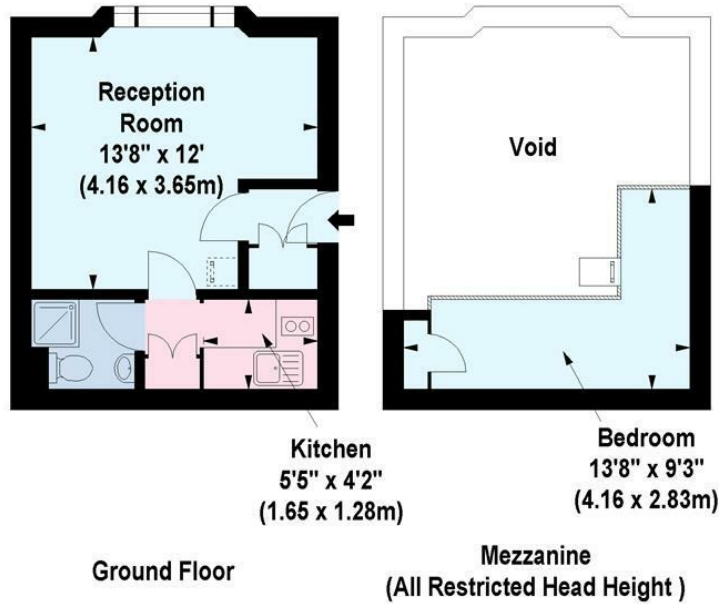


Illustration For Identification Purposes Only. Not To Scale
*Floorplan Drawn According To RICS Guidelines
© www.aikenmcrae.com 2015 (rm)

Energy Efficiency Rating		
	Current	Potential
Very energy efficient - lower running costs		
(92 plus) A		
(81-91) B		
(69-80) C		
(55-68) D		
(39-54) E		
(21-38) F		
(1-20) G		
Not energy efficient - higher running costs		
	66	82
England & Wales	EU Directive 2002/91/EC	

Environmental Impact (CO ₂) Rating		
	Current	Potential
Very environmentally friendly - lower CO ₂ emissions		
(92 plus) A		97
(81-91) B		
(69-80) C	82	
(55-68) D		
(39-54) E		
(21-38) F		
(1-20) G		
Not environmentally friendly - higher CO ₂ emissions		
England & Wales	EU Directive 2002/91/EC	