



HYDE PARK AGENCIES

ESTATE AGENTS · VALUERS · PROPERTY CONSULTANTS

Queens Court, Queensway, London



£2,150 Per Month

AVAILABLE 21 JULY 2025.

Lovely 1 bedroom apartment set in portered block moments from Hyde Park.

Bright reception, sofa bed, separate kitchen, bedroom and bathroom.

Quiet aspect set to the rear of the building. West facing.

Located on Queensway between Queensway and Bayswater tube stations among a myriad of shops, restaurants, cafes and supermarkets.

RENT INCLUDES CENTRAL HEATING AND HOT WATER.

Council Tax Band B

EPC Rating E

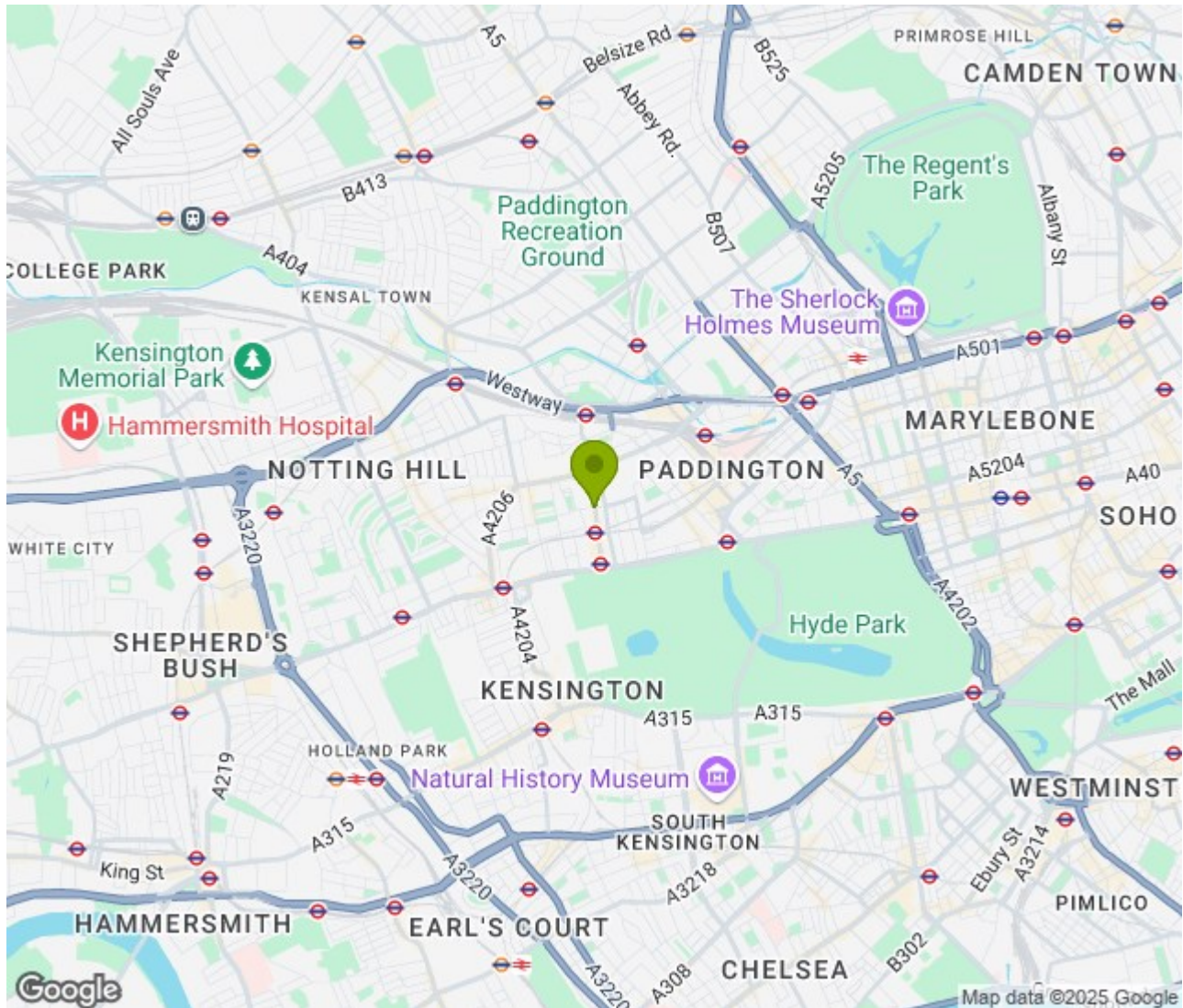
94 Queensway, London W2 3RR
T: +44 207 229 4495 E: info@hydeparkagencies.com

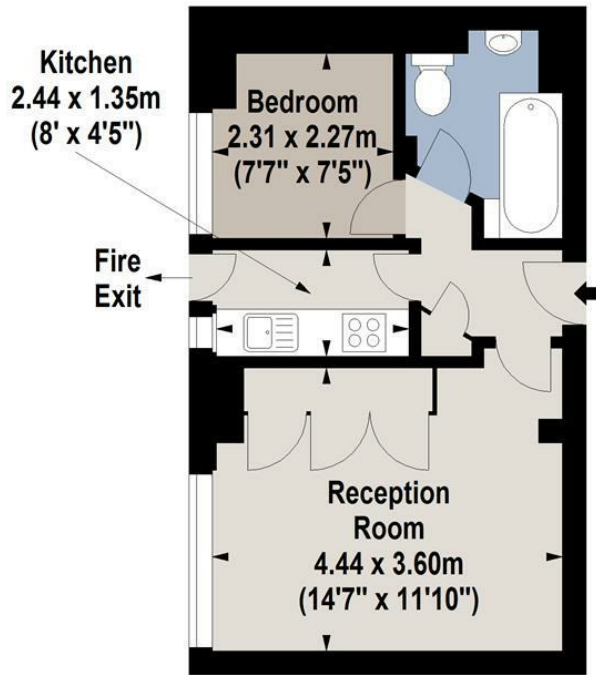
www.hydeparkagencies.com





Location: Bayswater, London





Sixth Floor

For Identification Purposes Only. Not To Scale. © www.totalvista.uk 2021

Queen's Court,
Queen's Way, W2

Approx. Gross Internal Area
33.91 Sq M - 365 Sq Ft



Energy Efficiency Rating

	Current	Potential
Very energy efficient - lower running costs		
(92 plus) A		
(81-91) B		
(69-80) C		
(55-68) D		
(39-54) E		
(21-38) F		
(1-20) G		
Not energy efficient - higher running costs		
	48	75
England & Wales	EU Directive 2002/91/EC	

Environmental Impact (CO₂) Rating

	Current	Potential
Very environmentally friendly - lower CO ₂ emissions		
(92 plus) A		
(81-91) B		
(69-80) C		
(55-68) D		
(39-54) E		
(21-38) F		
(1-20) G		
Not environmentally friendly - higher CO ₂ emissions		
England & Wales	EU Directive 2002/91/EC	