



HYDE PARK AGENCIES

ESTATE AGENTS · VALUERS · PROPERTY CONSULTANTS

Queens Court, Queensway, London



£2,150 Per Month

AVAILABLE NOW.

Lovely 1 bedroom apartment set in portered block moments from Hyde Park. Bright reception, sofa bed, separate kitchen, bedroom and bathroom. Quiet aspect set to the rear of the building. West facing.

Located on Queensway between Queensway and Bayswater tube stations among a myriad of shops, restaurants, cafes and supermarkets.

RENT INCLUDES CENTRAL HEATING AND HOT WATER.

Council Tax Band B

EPC Rating E

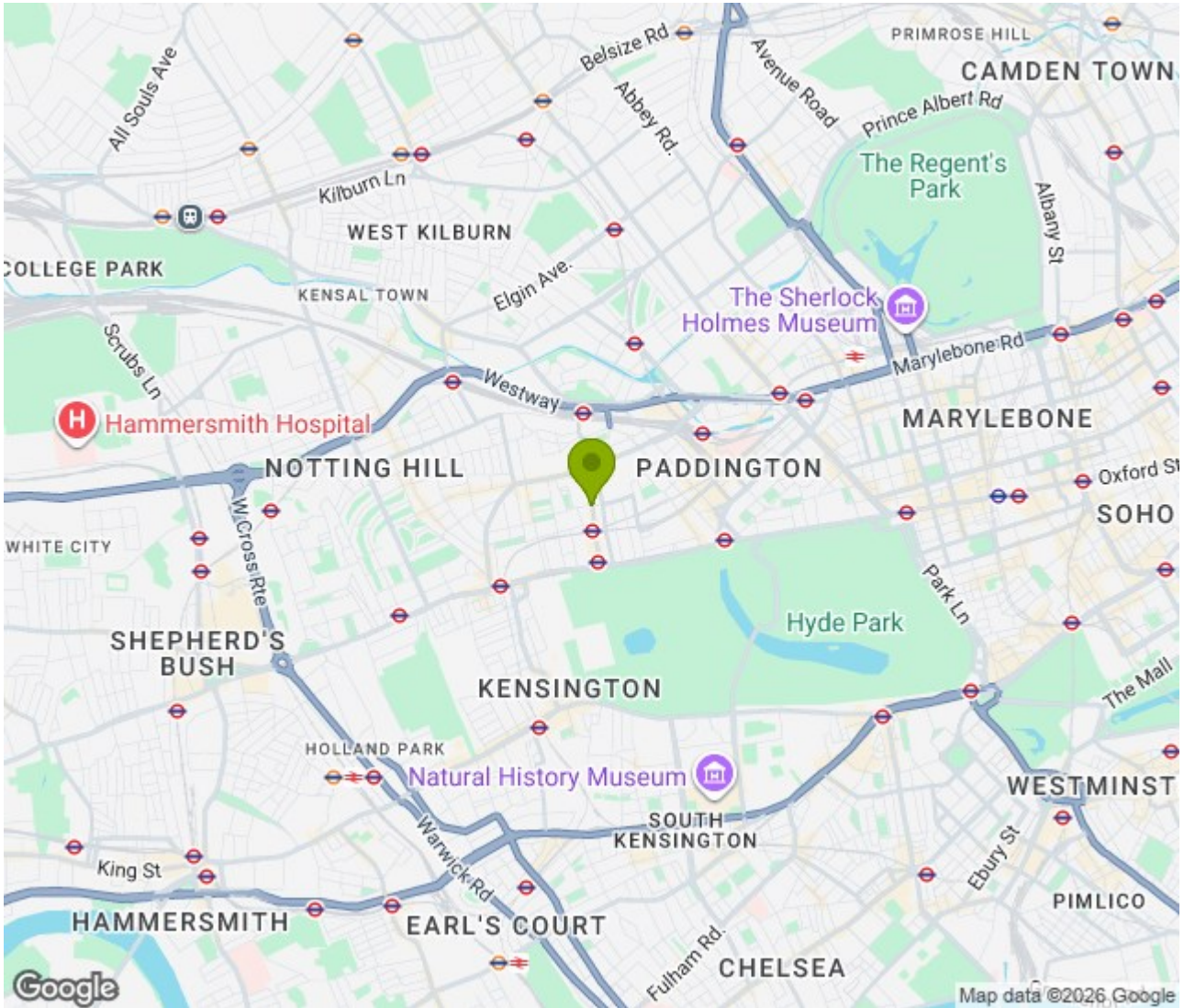
94 Queensway, London W2 3RR
T: +44 207 229 4495 E: info@hydeparkagencies.com

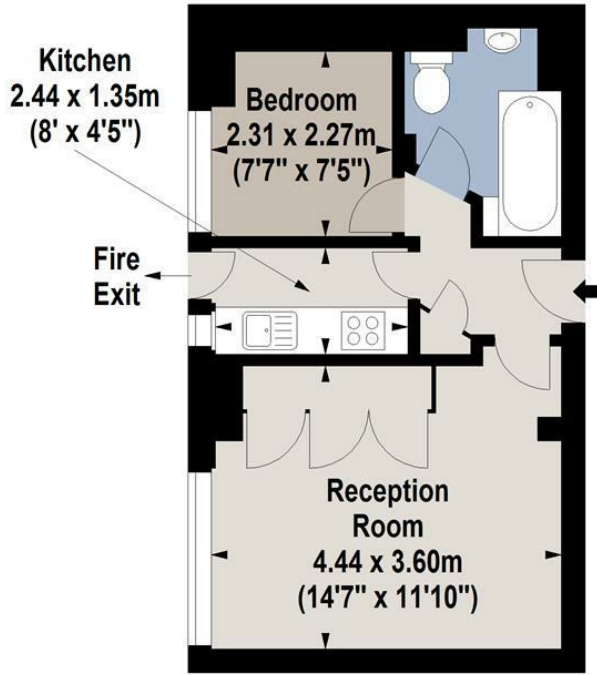
www.hydeparkagencies.com





Location: Bayswater, London





Sixth Floor



For Identification Purposes Only. Not To Scale. © www.totalvista.uk 2021

Queen's Court,
Queen's Way, W2

Approx. Gross Internal Area
33.91 Sq M - 365 Sq Ft



Energy Efficiency Rating		Current	Potential
<i>Very energy efficient - lower running costs</i>			
(92 plus) A			
(81-91) B			
(69-80) C			
(55-68) D			
(39-54) E			
(21-38) F			
(1-20) G			
<i>Not energy efficient - higher running costs</i>			
		48	75
England & Wales	EU Directive 2002/91/EC		

Environmental Impact (CO ₂) Rating		Current	Potential
<i>Very environmentally friendly - lower CO₂ emissions</i>			
(92 plus) A			
(81-91) B			
(69-80) C			
(55-68) D			
(39-54) E			
(21-38) F			
(1-20) G			
<i>Not environmentally friendly - higher CO₂ emissions</i>			
England & Wales	EU Directive 2002/91/EC		