



HYDE PARK AGENCIES

ESTATE AGENTS · VALUERS · PROPERTY CONSULTANTS

Flat 67 Ralph Court, Queensway, London



Price £650,000

2 bedroom, 2 bathroom apartment situated on 3rd floor of sought after period mansion block with the added security of 24 hour porterage. Passenger lift & goods lift.

Accommodation: spacious entrance lobby, large double reception, separate kitchen, master bedroom with ensuite shower room, 2nd bedroom, family bathroom. Communal central heating and hot water.

Located on Queensway close to Porchester Centre and library, shops and restaurants of Queensway and Westbourne Grove.

Residents have access to Porchester Square Gardens.

Close to tube stations of Royal Oak, Bayswater, Queensway, Paddington with Elizabeth line and Heathrow Express, and numerous buses. Short walk to the open spaces of Hyde Park.

Long lease: 135 years remaining

Service charge: £8250 approx incl communal heating & hot water.

Council Tax Band: E

EPC Rating: C

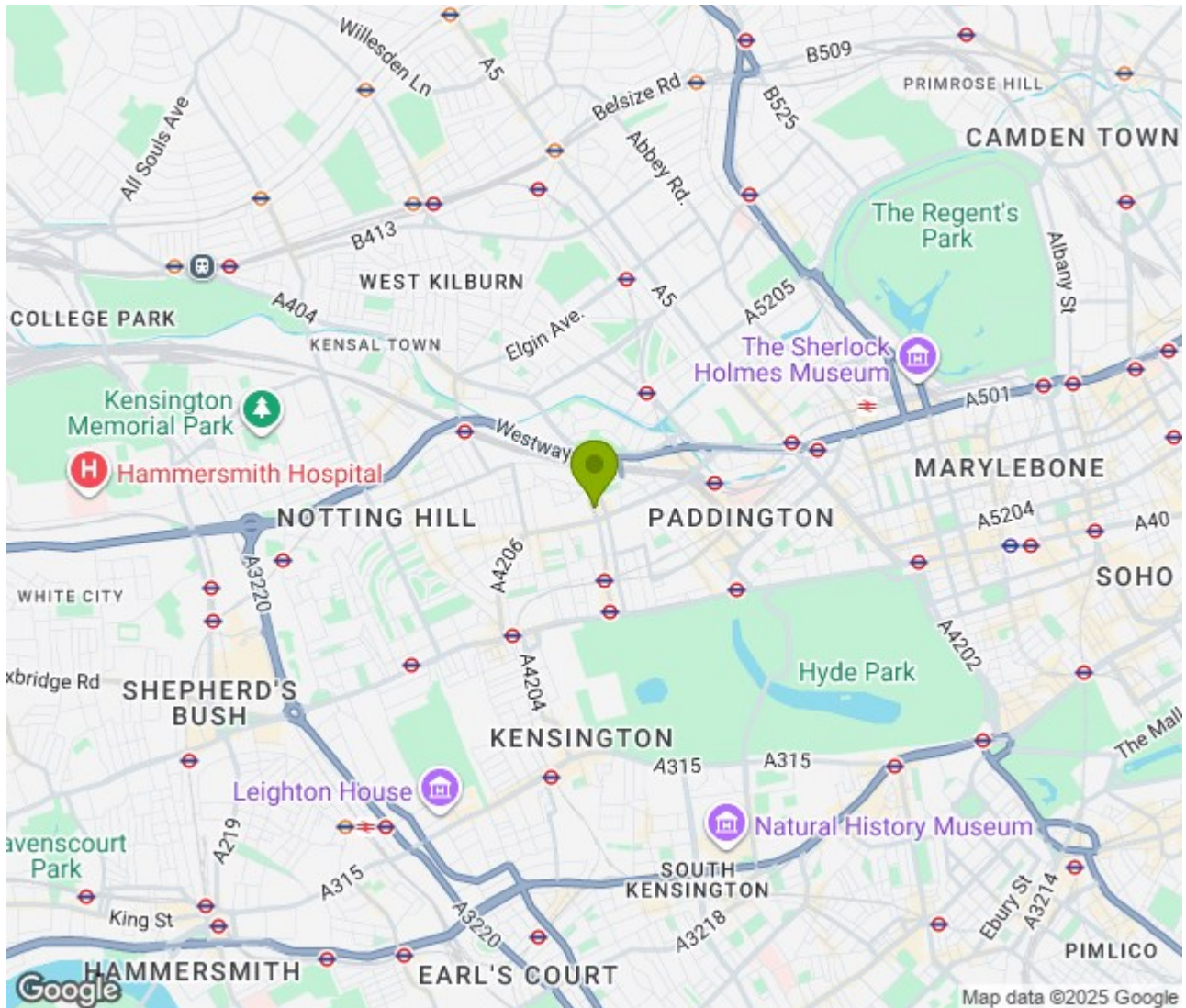
94 Queensway, London W2 3RR
T: +44 207 229 4495 E: info@hydeparkagencies.com

www.hydeparkagencies.com





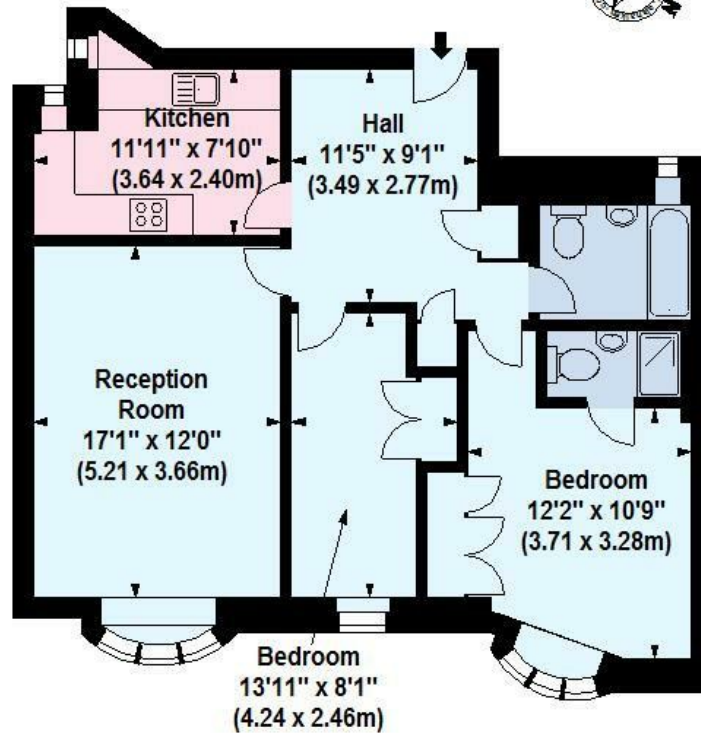
Location: , London





Ralph Court, Queensway, W2

Approx. Gross Internal Area *
773 Sq Ft - 71.81 Sq M



Third Floor

Illustration For Identification Purposes Only. Not To Scale
*Floorplan Drawn According To RICS Guidelines
© www.alanaiken.com 2014 (aa)

Energy Efficiency Rating

	Current	Potential
Very energy efficient - lower running costs		
(92 plus) A		
(81-91) B		
(69-80) C		
(55-68) D		
(39-54) E		
(21-38) F		
(1-20) G		
Not energy efficient - higher running costs		
	69	82
England & Wales	EU Directive 2002/91/EC	

Environmental Impact (CO₂) Rating

	Current	Potential
Very environmentally friendly - lower CO ₂ emissions		
(92 plus) A		
(81-91) B		
(69-80) C		
(55-68) D		
(39-54) E		
(21-38) F		
(1-20) G		
Not environmentally friendly - higher CO ₂ emissions		
England & Wales	EU Directive 2002/91/EC	