

K A T I E H O M E S

6 Bronte Court, Waverley Street, Nottingham, NG7 4EG

Asking Price £150,000

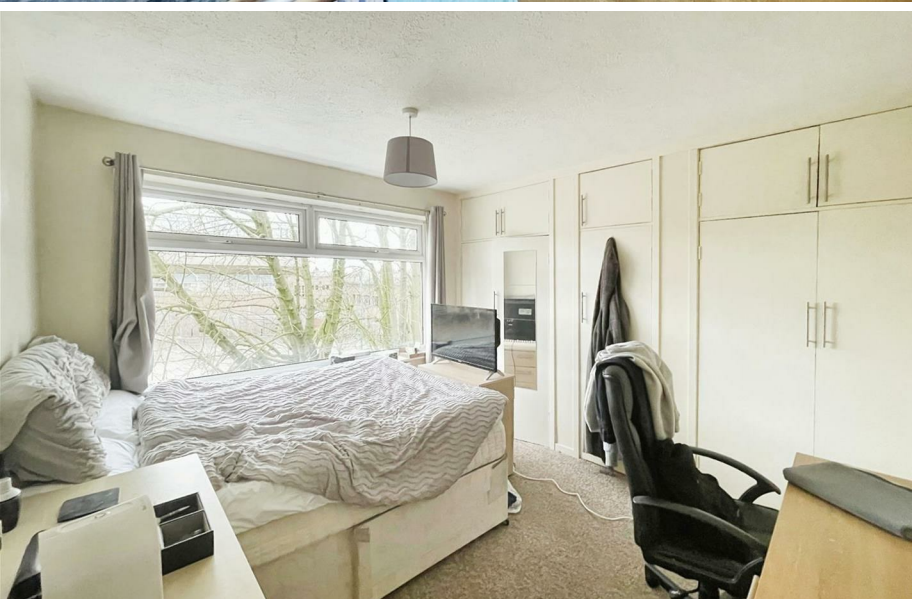
6 Bronte Court, Waverley Street, Nottingham, NG7 4EG



ASKING PRICE £150,000

*** GREAT INVESTMENT OPPORTUNITY *** This 3-bedroom maisonette in a sought-after area offers a spacious open-plan reception room with a charming fireplace, a well-appointed kitchen, comfortable bedrooms, a convenient location, and offers a great investment opportunity to potential landlords.





- CURRENTLY RENTED FOR £1000 PCM
- THREE BEDROOMS
- INVESTMENT OPPERTUNITY
- IDEAL FOR STUDENTS
- CLOSE TO PUBLIC TRANSPORT LINKS
- EPC RATING - C





Overview

Welcome to this three-bedroom maisonette located in a highly sought-after area. This property is in good condition and offers a range of features that make it an ideal choice for investors.

Upon entering, you will immediately notice the open-plan reception room, providing a spacious and welcoming ambiance. The room boasts a charming fireplace, creating a cosy atmosphere, perfect for relaxation and entertaining guests. Natural light floods the room, enhancing the overall sense of brightness and warmth.

The property features a well-appointed kitchen. The three bedrooms in this maisonette offer comfortable living spaces. The first bedroom is generously sized, featuring a double bed, built-in wardrobes, and an abundance of natural light. The second bedroom also offers a double bed and built-in wardrobes, providing ample storage space. The third bedroom is a single room and would be perfect for a home office too.

In addition to its attractive interior, this property benefits from its location. Situated close to public transport links, it offers convenient access to the surrounding areas. Green spaces and walking routes are within easy reach. Furthermore, the property is in close proximity to the university, making it an excellent choice for students.

With a desirable EPC rating of C and a council tax band of A, this maisonette is a fantastic investment opportunity. Additional features include open-plan living, parking facilities, and a range of amenities within easy reach.

Entrance

Open to the Living / Dining Room, this is a perfect welcoming space that also benefits from coat hooks, storage cupboard and extra storage under the stairs.

Living / Dining Room

A large and open-plan room, you have ample space for furniture to use the space as a living and dining space. With features such as a fireplace and a bay window giving the room that added bit of character, which not all apartments have.

Bedroom One

The largest of the bedroom in the property, this room boasts a large run of built-in wardrobes and a huge window that floods in lots of natural light.

Bedroom Two

A large double bedroom also with built in wardrobes.

Bedroom Three

A single bedroom, which could also be used as a home office or dressing.

Bathroom

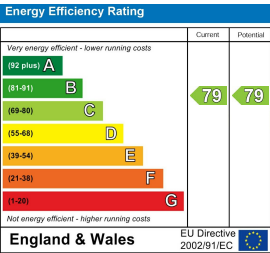
A three-piece bathroom, which includes an electric shower over the bath, sink and WC and also benefits from a storage cupboard.

Landing

Large landing space that could possibly even house a table and chairs and still feel balanced.

Contact us

Contact Katie Homes Nottingham today to book in for your viewing or to get some more information.





HAPPIER HOME HUNTING



TEL: 0115 837 7375

EMAIL: VIEWINGS@KATIEHOMES.CO.UK

WEB: WWW.KATIEHOMES.CO.UK

ADDRESS: 76 DERBY ROAD, NOTTINGHAM, NG1 5FD