



Heathfield Road, W3

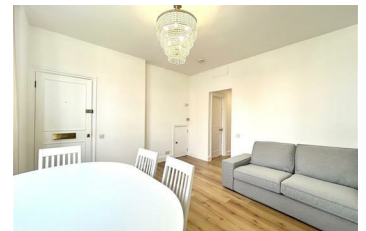
£2,450

Newly refurbished and beautifully presented, this spacious two bedroom, two bathroom apartment sits on the sought after Heathfield Road in Acton.

The property offers a bright separate living room, ideal for both relaxing and entertaining, along with a well laid out kitchen. Both bedrooms are well proportioned and provide comfortable, practical living space, while the two modern bathrooms add further convenience.

Perfectly positioned just a five minute walk from Acton Town station, the apartment benefits from excellent transport links while remaining on a quiet residential road away from the hustle and bustle.

A great option for professionals or a small family looking for a well located and comfortable home.



Energy Efficiency Rating		Environmental Impact (CO ₂) Rating	
Current	Potential	Current	Potential
A	A	A	A
100 kWh/m ² per year (kWh/m ²)	100 kWh/m ² per year (kWh/m ²)	100 g/m ² per year (g/m ²)	100 g/m ² per year (g/m ²)
72	72		
<small>Not energy efficient - Higher heating costs</small>		<small>Not environmentally friendly - Higher CO₂ emissions</small>	
<small>England & Wales 2008/10 EPC</small>		<small>England & Wales 2008/10 EPC</small>	