



Pump House Crescent, TW8

£3,000 Per Month

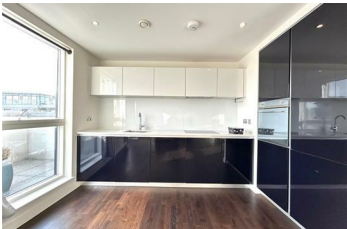
A modern spacious two double bedroom flat with stunning views from balcony within a large development in Kew Bridge.

The property comprises a spacious & bright reception with a dining space, a modern open plan kitchen, two double bedrooms and two stylish fully-tiled bathrooms.

The property benefits from a 24 hours concierge service, a residential gym, integrated appliances in the kitchen, large windows and private balcony with stunning views. There is an underground parking space with security gate (subject to price negotiation).

This development is located a couple minutes away from restaurants, cafes and bars of Kew Bridge. Also it's located within a short walk from Kew Bridge station (National Rail) and Gunnersbury tube station (District and Overground lines).

- 24 hours concierge
- Two double size bedrooms
- Underground parking space (subject to price negotiation)
- Easy access to amenities
- Bright and large reception
- Two stylish bathrooms
- Residential gym
- Modern open plan kitchen
- Private balcony with stunning views
- Close to Thames River



Energy Efficiency Rating			Environmental Impact (CO ₂) Rating		
How energy efficient - lower rating costs	Current	Potential	How environmentally friendly - lower CO ₂ emissions	Current	Potential
(A) (91-100)	(B) (81-90)	(C) (71-80)	(A) (10-15)	(B) (16-20)	(C) (21-25)
(D) (61-70)	(E) (51-60)	(F) (41-50)	(D) (31-40)	(E) (41-50)	(F) (51-60)
(G) (1-40)			(G) (61-80)		
Not energy efficient - higher rating costs			Not environmentally friendly - higher CO ₂ emissions		
England & Wales			England & Wales		
2020/01/01			2020/01/01		