



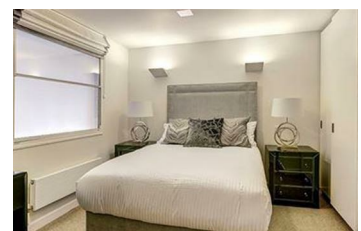
Fulham Road, SW3

£1,350 Per Week

The apartment comprises a fantastic 30 ft reception area perfect for entertaining leading to an open plan modern kitchen with fully integrated appliances and stone work tops, there is a large decked terrace along one side of the reception accessed via floor to ceiling windows which brings a wonderful sense of space to the room and fills the property with an abundance of natural light.

Both double bedrooms offer ample storage space, with the master bedroom suite comprising of a large en-suite bathroom with a raindrop shower over the bath and automatic sensor lighting. The family bathroom features a double walk in shower, with automatic lighting. Located in the heart of Chelsea, private ported building with lift and outside space.

- Desirable central Chelsea Location
- Dedicated Property Manager
- 24 Hour Emergency Number
- Private Decked Terrace
- Walking to the Kings Road / South Kensington



Energy Efficiency Rating		Environmental Impact (CO ₂) Rating	
Low energy efficient - lower heating costs	Current	More environmentally friendly - lower CO ₂ emissions	Current
(11-15) A		(10-14) A	
(16-20) B		(15-19) B	
(21-25) C		(20-24) C	
(26-29) D		(25-29) D	
(30-34) E		(30-34) E	
(35-39) F		(35-39) F	
(40-45) G		(40-45) G	
Not energy efficient - higher heating costs		Not environmentally friendly - higher CO ₂ emissions	
EU Standard 2002/91/EC	82 83	EU Standard 2002/91/EC	82 82
England & Wales		England & Wales	