

Curtis & Parker

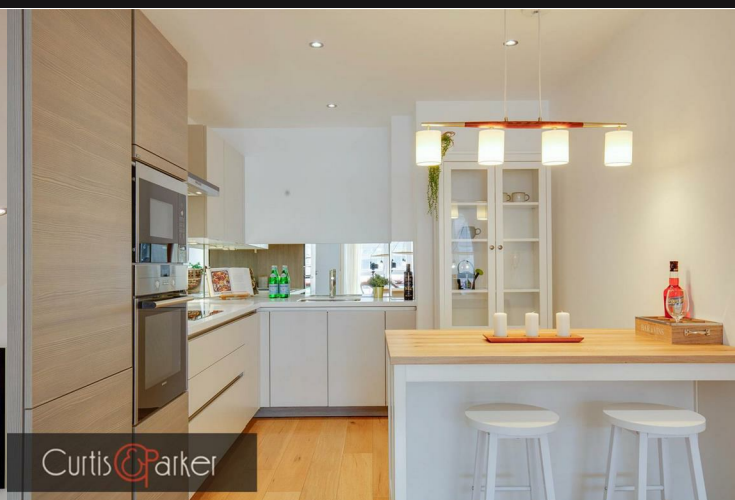
211 King Street, Hammersmith, London, W6 9JT

Tel: 020 8741 7100

Email: home@curtisandparker.co.uk

www.curtisandparker.co.uk

Curtis & Parker



Apt. 7, The Glenbrook, 85, Glenthorne Road, London, W6 0DJ

Guide Price £575,000

Modern Urban Living at Glenbrook apartments, Glenthorne Road W6

Location: Situated in the vibrant neighbourhood of Hammersmith, The Glenbrook apartments offers the perfect blend of urban convenience and tranquil living.

Prime Position: This 1st-floor apartment is only a short walk away from the picturesque Thames riverside.

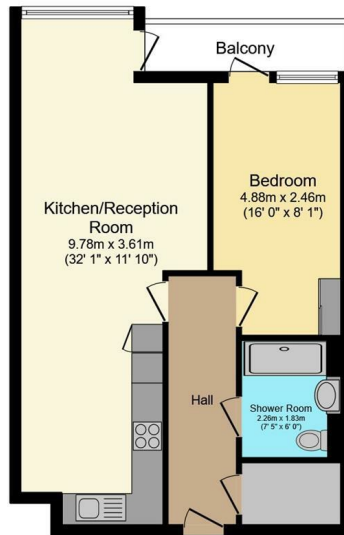
Contemporary Design: Step into a sleek lobby and discover a modern oasis designed for sophisticated urban dwellers.

Spacious Interiors: This one-bedroom, one-bathroom apartment features an open-plan layout flooded with natural light, creating a bright and airy ambiance throughout.

Private Balcony: Enjoy the outdoors from your own private balcony, perfect for morning coffees or evening relaxation.

Priced to Sell: With a competitive price of £575,000, this apartment presents an exceptional opportunity to invest in modern urban living in one of London's most desirable neighbourhoods.

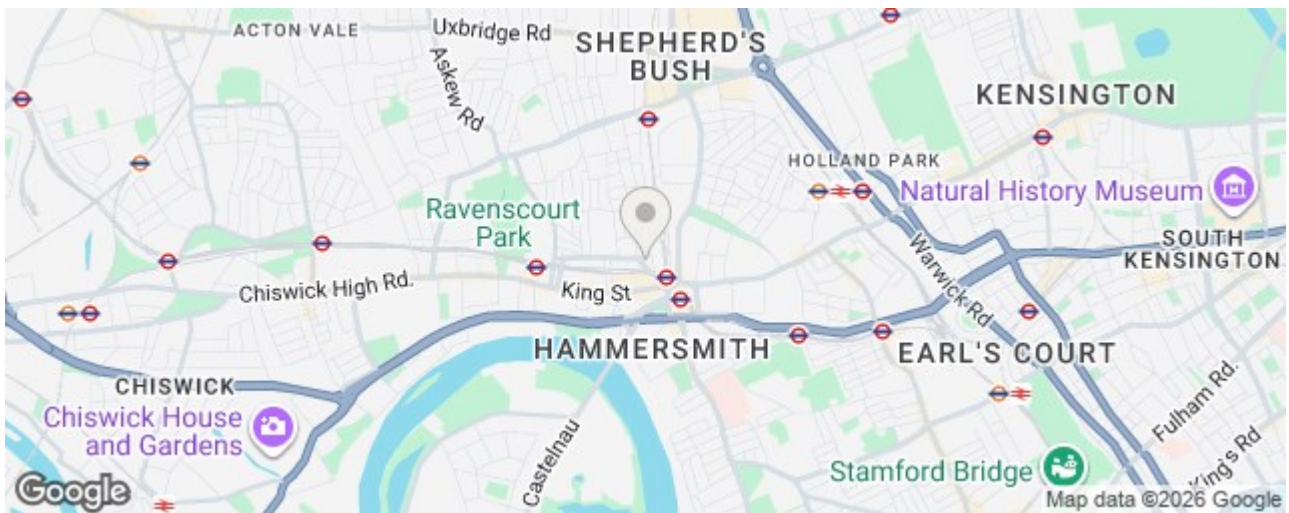
Don't miss out on the chance to make this stylish apartment your new home. Contact us today to arrange a viewing!



Curtis & Parker

Total floor area 59.0 m² (635 sq.ft.) approx

This floor plan is for illustrative purposes only. It is not drawn to scale. Any measurements, floor areas (including any total floor area), openings and orientation are approximate. No details are guaranteed, they cannot be relied upon for any purpose and they do not form part of any agreement. No liability is taken for any error, omission or misstatement. A party must rely upon its own inspection(s). Powered by www.focalagent.com



| Energy Efficiency Rating | | Environmental Impact (CO ₂) Rating | |
|--------------------------|-------|--|-------|
| Rating | Score | Rating | Score |
| A | 82-82 | A | 82-82 |
| B | 69-81 | B | 69-81 |
| C | 55-68 | C | 55-68 |
| D | 41-54 | D | 41-54 |
| E | 27-40 | E | 27-40 |
| F | 13-26 | F | 13-26 |
| G | 1-12 | G | 1-12 |

Curtis & Parker