



## 54, Gooch House Glenthorne Road, Hammersmith, London, W6 0JY

### Asking Price £600,000

Modern 2-Bed, 2-Bath Apartment with Parking in Glenthorne Road, W6

Welcome to your new home in the heart of Glenthorne Road! This spacious and stylish apartment offers the perfect blend of modern living and convenience for you and your family.

#### Key Features:

**Location:** Ideally situated in Glenthorne Road, W6, this property offers easy access to a range of amenities including shops, schools, parks, and excellent transportation links.

**Layout:** Enjoy the spacious layout featuring two bedrooms, two bathrooms, a hallway, and an open-plan kitchen/living room, providing ample space for comfortable living and entertaining.

**Balcony:** Step out onto your private balcony and soak in the stunning views of the surrounding area while enjoying your morning coffee or relaxing in the evening.

**Parking:** Benefit from a dedicated parking space in a secure car park, providing convenience and peace of mind for your vehicle.

**Modern Design:** Contemporary interior design with high-quality finishes and fixtures throughout, creating a sleek and inviting atmosphere.

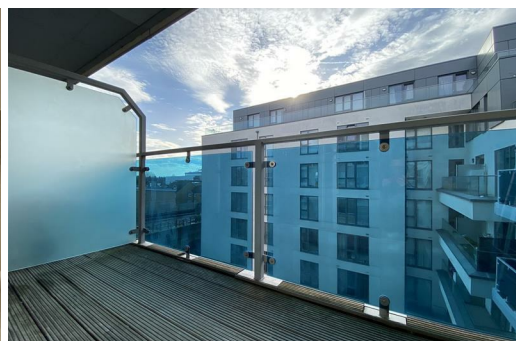
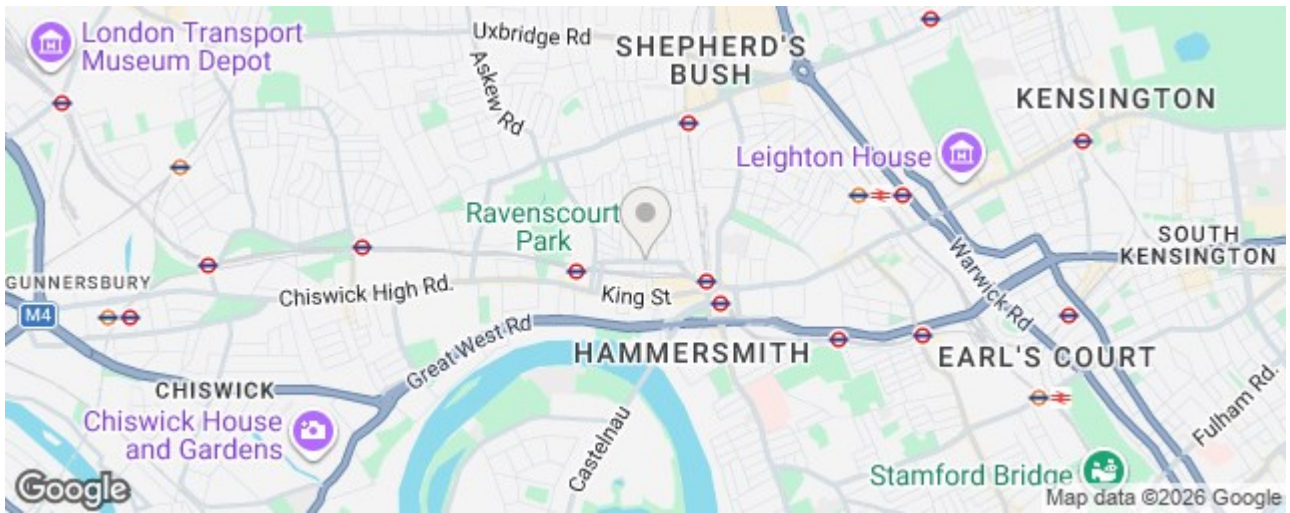
**Security:** Rest easy knowing that your home is located in a secure building.

**Family-Friendly:** Located in a family-friendly neighborhood with a strong sense of community, this property is perfect for families looking to put down roots and create lasting memories.

This property presents an excellent opportunity for buyers seeking a modern and spacious home in a desirable location. Whether you're a growing family or a professional couple looking for your dream home, this apartment ticks all the boxes. Don't miss out on the chance to make this your own slice of urban paradise in Glenthorne Road!



**FOURTH FLOOR**  
786 SQ FT / 73.0 SQ M



Energy Efficiency Rating		Environmental Impact (CO <sub>2</sub> ) Rating	
Current	Potential	Current	Potential
A	A	B	B
B	B	C	C
C	C	D	D
D	D	E	E
E	E	F	F
F	F	G	G
G	G		

83 83

83 83

England & Wales