



## Flat 54 Gooch House - Glenthorne Road, Hammersmith, W6

**£3,000 Per Month**

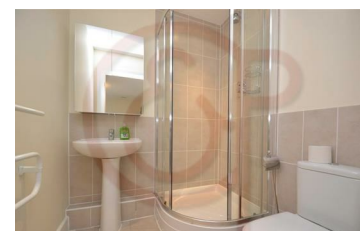
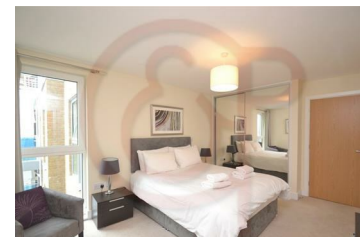
Superb two double bedroom fourth floor apartment in central Hammersmith, moments from the Broadway shopping centre and Hammersmith station.

The property comprises a bright and airy lounge, fully fitted kitchen, two good sized double bedrooms and two modern bathrooms.

Further benefits include a private balcony, lift access, off street parking and a convenient location close to all the shopping and dining amenities that Hammersmith and Chiswick have to offer.

Transport links include Hammersmith station (Circle, Piccadilly and Hammersmith & City lines).

- Bright reception
- Two bathrooms
- Lift access
- Close to Hammersmith station
- Open plan kitchen
- Private balcony
- Access to communal roof terrace
- Two double bedrooms
- Ample natural lights
- Off street parking



Energy Efficiency Rating		Environmental Impact (CO <sub>2</sub> ) Rating	
Current	Target	Current	Target
<b>A</b>	<b>A</b>	<b>B</b>	<b>B</b>
83	83	33	33

England & Wales 2008/1/EC