

**Curtis & Parker**

211 King Street, Hammersmith, London, W6 9JT

Tel: 020 8741 7100

Email: [home@curtisandparker.co.uk](mailto:home@curtisandparker.co.uk)[www.curtisandparker.co.uk](http://www.curtisandparker.co.uk)

# Curtis & Parker

**23, The Glenbrook Glenthorne Road, London, W6 0DJ****Guide Price £899,950**

Modern Urban Living at Glenbrook Apartments, Glenthorne Road W6

**Location:** Nestled in the dynamic neighbourhood of Hammersmith, Glenbrook Apartments provides the perfect balance of city living and peaceful retreat.

**Prime Position:** Located on the 4th floor, this apartment offers stunning views of the cityscape and is just a short stroll from the beautiful Thames riverside.

**Contemporary Design:** Step into a sleek, modern lobby and experience a sophisticated environment crafted for urban living at its finest.

**Spacious Interiors:** The two-bedroom, two-bathroom apartment boasts an open-plan layout, inviting abundant natural light to create a bright and welcoming atmosphere.

**Private Balcony:** Enjoy outdoor living with your own private balcony, ideal for morning coffees or unwinding after a busy day.

**Luxurious Amenities:** The master bedroom features an en-suite bathroom for ultimate comfort, while the second bedroom offers versatility as a guest room or home office.

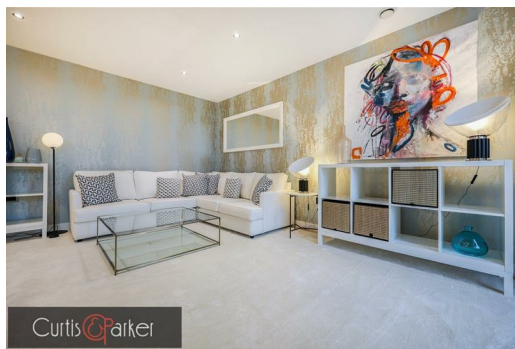
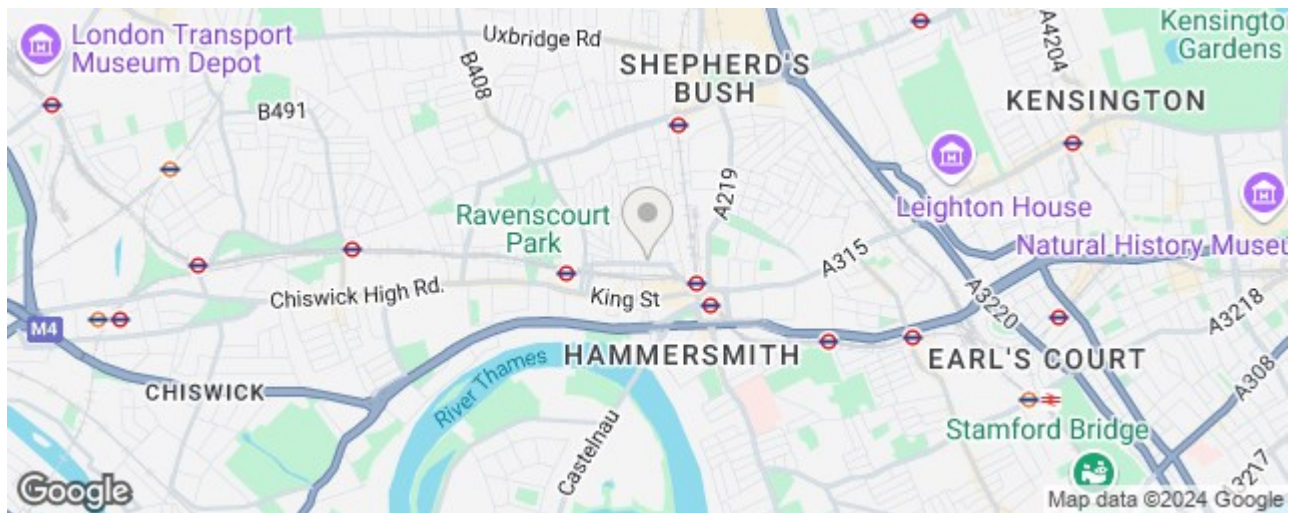
**Modern Appeal:** Designed for contemporary lifestyles, this apartment offers both style and practicality, making it an ideal home for those seeking urban luxury.

**Prime Location:** Situated in the heart of Hammersmith, residents benefit from excellent transport links, as well as easy access to local shops, restaurants, and leisure options.

**Stunning Views:** Enjoy panoramic views of the surrounding area, adding an extra touch of luxury to your everyday living.

**Viewing Opportunity:** Don't miss the chance to make this elegant apartment your new home. Contact us today to arrange a viewing!





Energy Efficiency Rating		Environmental Impact (CO <sub>2</sub> ) Rating	
A	86	A	86
B	85	B	85
C	84	C	84
D	83	D	83
E	82	E	82
F	81	F	81
G	80	G	80