



**, Hammersmith, W6**

**£1,850 Per Month**

\*\*\*\* All bills are included in the rent \*\*\*\*  
 A single person is for £1,850 per month or a couple is for £1,950 per month as bills are included.

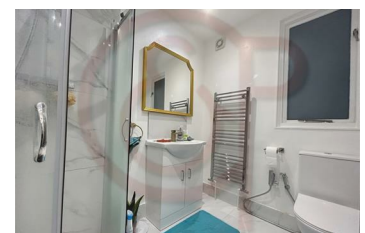
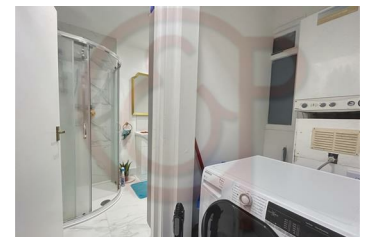
Recently refurbished studio flat situated on the first floor in the heart of Hammersmith & Shepherds Bush on one of best streets in Hammersmith.

The property comprises a sitting space, a sleeping space, a study space/dining space, a separate kitchen, a washer & dryer and a modern bathroom.

The property benefits from recently refurbished, all bills are inclusive, wood floors, gas central heating and ample storage space.

The property is located minutes away from Hammersmith tube station (Piccadilly, District, Circle and Hammersmith & City lines), Goldhawk Road station (Circle and Hammersmith & City lines) and Shepherds Bush station (Central line).

- All bills are included
- Self-contained studio
- Separate kitchen
- Sitting & sleeping space
- Modern bathroom
- Washer & dryer
- Gas central heating
- Wood floors throughout
- Close to Goldhawk Road station
- Easy access to Hammersmith station



Energy Efficiency Rating		Environmental Impact (CO <sub>2</sub> ) Rating	
Current	Potential	Current	Potential
100 kWh/m <sup>2</sup> (A)	45 kWh/m <sup>2</sup> (D)	100 g/kWh (D)	45 g/kWh (D)
90 kWh/m <sup>2</sup> (B)	40 kWh/m <sup>2</sup> (D)	90 g/kWh (D)	40 g/kWh (D)
80 kWh/m <sup>2</sup> (C)	35 kWh/m <sup>2</sup> (D)	80 g/kWh (D)	35 g/kWh (D)
70 kWh/m <sup>2</sup> (D)	30 kWh/m <sup>2</sup> (D)	70 g/kWh (D)	30 g/kWh (D)
60 kWh/m <sup>2</sup> (E)	25 kWh/m <sup>2</sup> (D)	60 g/kWh (D)	25 g/kWh (D)
50 kWh/m <sup>2</sup> (F)	20 kWh/m <sup>2</sup> (D)	50 g/kWh (D)	20 g/kWh (D)
40 kWh/m <sup>2</sup> (G)	15 kWh/m <sup>2</sup> (D)	40 g/kWh (D)	15 g/kWh (D)

Not energy efficient - Higher CO<sub>2</sub> emissions  
 Not environmentally friendly - Higher CO<sub>2</sub> emissions

England & Wales 2008/11/EC  
 England & Wales 2008/11/EC