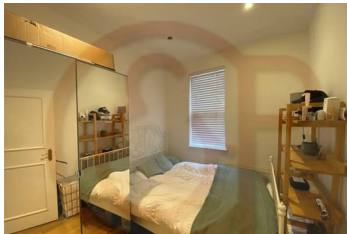




, W14

£392 Per Week

Beautiful one bedroom flat situated on the first floor of a Victorian conversion, moments from Kensington High Street and just a short walk to Earl's Court station. The property comprises a bright reception room, open plan kitchen, double bedroom and a fully tiled bathroom. The flat is presented in good condition throughout and benefits from being moments from an array of local amenities and large 24h Tesco. Transport links include Earl's Court station (District and Piccadilly lines)



- Double bedroom
- Fully fitted kitchen
- Moments from Kensington High Street
- Walking distance to Earl's Court
- Close to 24h Tesco

