



## 52 Colin Gardens

, London, NW9 6EJ

**£579,950**

**\*\*AN ATTRACTIVE THREE BEDROOM SEMI DETACHED FAMILY HOME\*\*** We are delighted to offer for sale this fantastic three bedroom property situated on a desirable residential road in the heart of Colindale. Internally the property benefits from a welcoming entrance hall, a front reception room with plenty of natural light coming through the bay window, a second reception/dining room with patio doors leading to the generous rear garden, a fitted kitchen with ample workspace, cupboards and white goods. On the first floor there are three good size bedrooms, a family bathroom and access to the insulated/boarded loft. Outside the property enjoys off road parking to the front, a garage via a shared driveway and an approximate 80ft rear garden.

Colin Gardens is conveniently located to numerous amenities including the highly regarded Hyde primary school and offers quick access to major roads including the A41, North Circular Road, M1 motorway and Colindale Northern line station. Call now to arrange an early viewing of this CHAIN FREE home.

- SEMI DETACHED HOUSE
- THREE BEDROOMS
- TWO RECEPTION ROOMS
- FITTED KITCHEN
- LARGE REAR GARDEN
- POTENTIAL TO EXTEND STPP
- OFF ROAD PARKING
- CHAIN FREE SALE

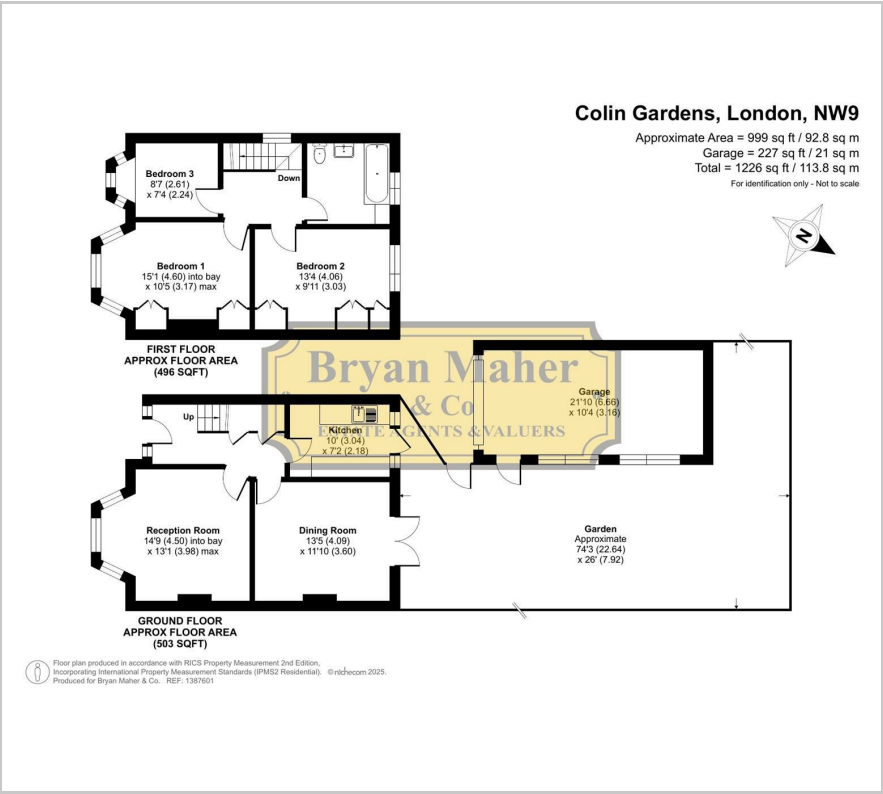
### Viewing

Please contact our Bryan Maher & Co Office on 020 8904 8904 if you wish to arrange a viewing appointment for this property or require further information.

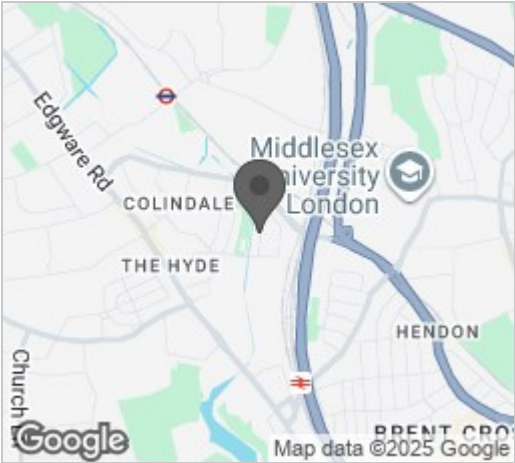




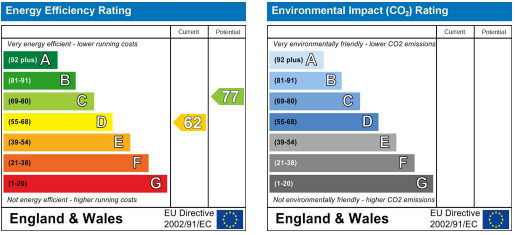
Floor Plan



Area Map



Energy Efficiency Graph



These particulars, whilst believed to be accurate are set out as a general outline only for guidance and do not constitute any part of an offer or contract. Intending purchasers should not rely on them as statements of representation of fact, but must satisfy themselves by inspection or otherwise as to their accuracy. No person in this firms employment has the authority to make or give any representation or warranty in respect of the property.