



69 Barn Way
 , WEMBLEY, HA9 9NP
£2,800 Per Month

****EXCELLENT CONDITION FOUR BEDROOMS, TWO BATHROOMS, WEMBLEY PARK, RECENTLY REFURBISHED, OWN GARAGE****
 Located on the much sought after Barn Hill Estate is this stunning four bedroom house situated adjacent to Fryent Country Park open space. The property is located in the heart of Wembley Park close to the newly regenerated Wembley City which offers a wide selection of Bars, Restaurants, Cinemas and the new London Designer Outlet. The transport links are fantastic with easy access to Wembley Park Metropolitan/Jubilee train lines, fast bus routes, numerous motorways and Heathrow airport being the closest. Ideal for the French International Lycee, Ark Academy and Asda Supermarket is just a short walk away. **AVAILABLE NOW**

- SEMI DETACHED HOUSE
- FOUR BEDROOMS
- TWO BATHROOMS
- BARN HILL
- WEMBLEY PARK
- FRENCH INTERNATIONAL LYCEE
- GARAGE
- AVAILABLE NOW

Viewing

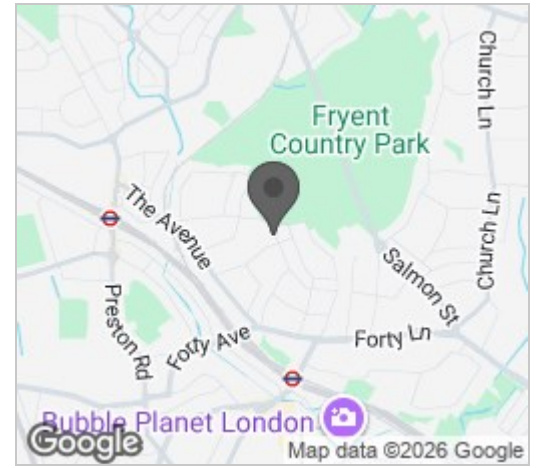
Please contact our Bryan Maher & Co Office on 020 8904 8904 if you wish to arrange a viewing appointment for this property or require further information.



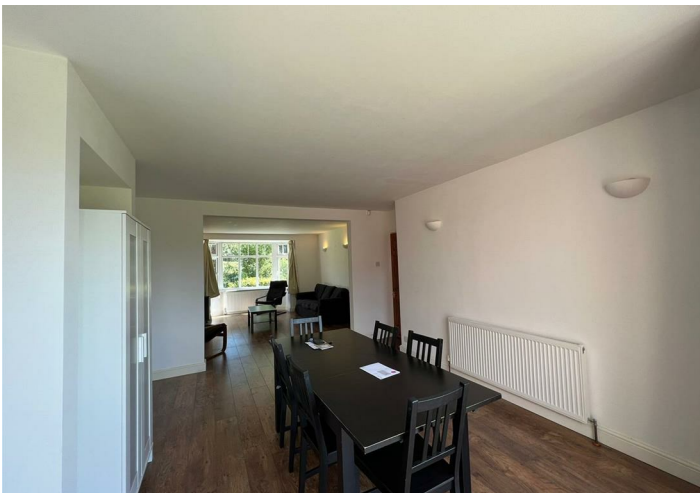
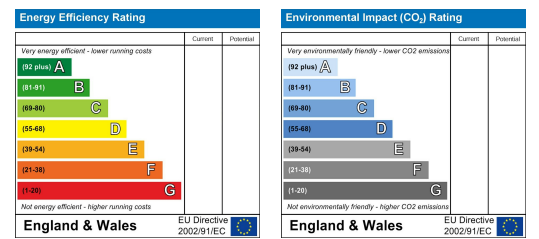
Floor Plan



Area Map



Energy Efficiency Graph



These particulars, whilst believed to be accurate are set out as a general outline only for guidance and do not constitute any part of an offer or contract. Intending purchasers should not rely on them as statements of representation of fact, but must satisfy themselves by inspection or otherwise as to their accuracy. No person in this firm's employment has the authority to make or give any representation or warranty in respect of the property.

