



**14 Robin Grove**  
 , Harrow, HA3 9TP  
**£399,950**

**\*\*CASH BUYERS ONLY FOR THIS PROPERTY OF NON STANDARD CONSTRUCTION\*\*** A well presented three bedroom end of terrace home built with pre-reinforced concrete offering a spacious and practical living accommodation throughout. Internally the property benefits from two reception rooms, a fitted kitchen, three good size bedrooms and a family bathroom. Further benefits include a generous front garden with off road parking, space to the side with potential to extend subject to usual planning consents and a large enclosed rear garden with a solid storage shed. The property is located within walking distance to Kingsbury Jubilee Line, Preston Road Metropolitan Line, excellent schools and open spaces. CALL NOW TO ARRANGE AN EARLY INSPECTION TO AVOID DISSAPPOINTMENT.

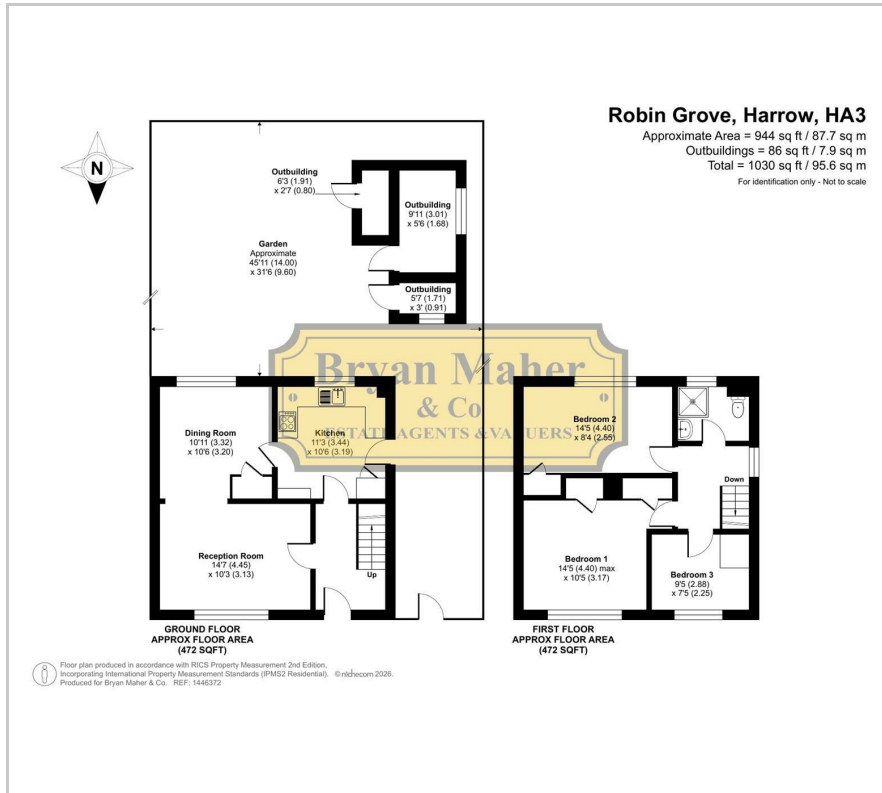
- CASH BUYERS ONLY
- END TERRACE HOUSE
- THREE BEDROOMS
- TWO RECEPTION ROOMS
- SPACE TO EXTEND SUBJECT TO PLANNING
- OFF ROAD PARKING
- NEAR TO UNDERGROUND STATIONS
- CHAIN FREE SALE
- PRC CONSTRUCTION

**Viewing**

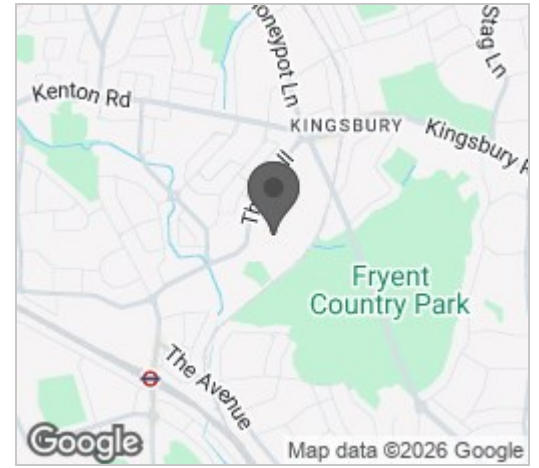
Please contact our Bryan Maher & Co Office on 020 8904 8904 if you wish to arrange a viewing appointment for this property or require further information.



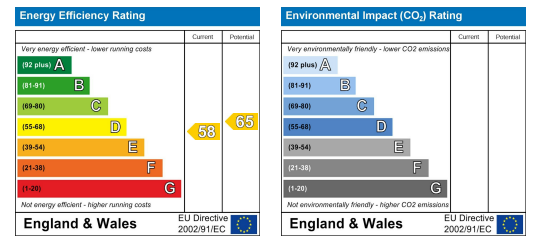
# Floor Plan



# Area Map



# Energy Efficiency Graph



These particulars, whilst believed to be accurate are set out as a general outline only for guidance and do not constitute any part of an offer or contract. Intending purchasers should not rely on them as statements of representation of fact, but must satisfy themselves by inspection or otherwise as to their accuracy. No person in this firm's employment has the authority to make or give any representation or warranty in respect of the property.