



14 Shelley Gardens

, Wembley, HA0 3QG

£2,650 Per Calendar Month

A WELL PRESENTED FOUR BEDROOM, TWO BATHROOM FAMILY HOME LOCATED WITHIN THE SUDBURY COURT ESTATE We are delighted to have been favoured with instructions to bring to the market this superb property which is offered in excellent condition throughout. Internally the property briefly comprises of a welcoming entrance hall, a front reception room, a large kitchen/dining room, three first floor bedrooms with fitted wardrobes, a family bathroom, a spacious loft bedroom with ample storage, a separate kitchenette and an en-suite shower room. Externally the front provides off street parking and there is an eye catching garden to the rear. **AVAILABLE NOW**

- FOUR BEDROOMS
- FRONT RECEPTION ROOM
- LARGE KITCHEN/DINING ROOM
- FITTED WARDROBES
- LARGE LOFT BEDROOM
- EN-SUITE SHOWER ROOM
- SEPARATE KITCHENETTE
- OFF STREET PARKING

Viewing

Please contact our Bryan Maher & Co Office on 020 8904 8904 if you wish to arrange a viewing appointment for this property or require further information.



4



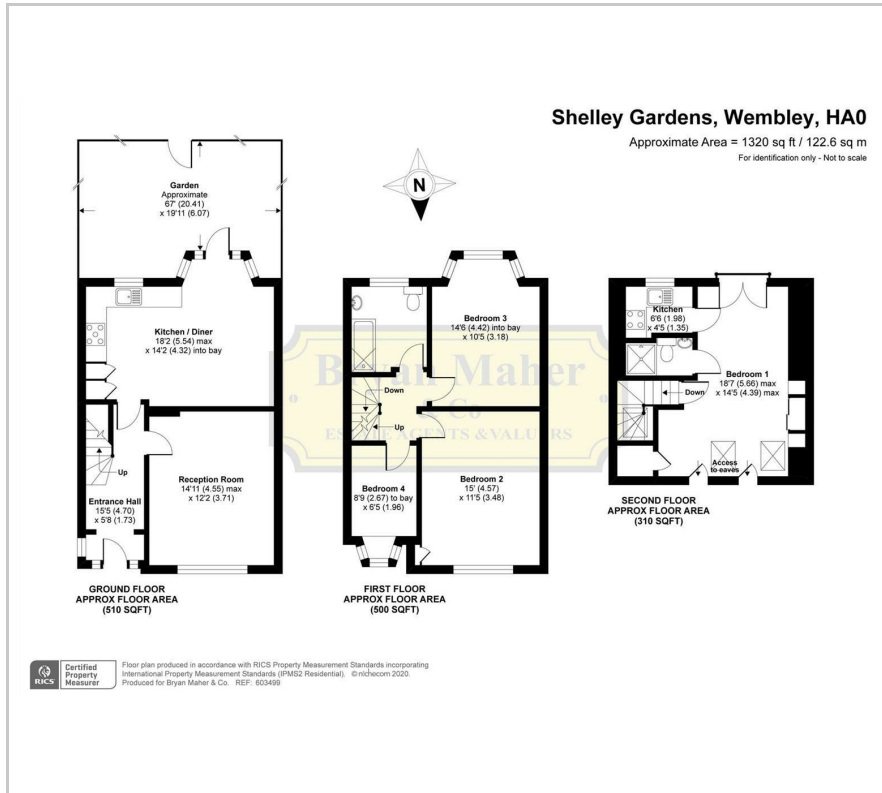
2



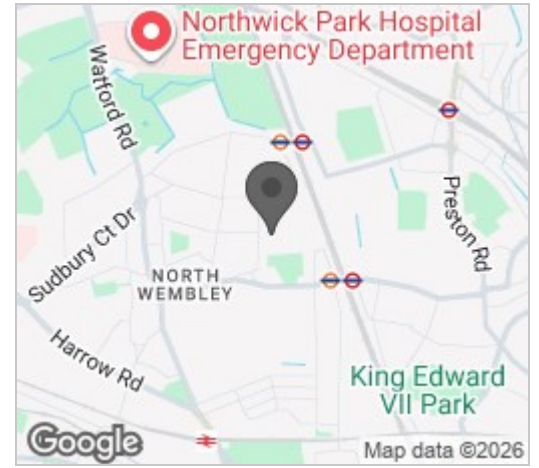
2



Floor Plan



Area Map



Energy Efficiency Graph



These particulars, whilst believed to be accurate are set out as a general outline only for guidance and do not constitute any part of an offer or contract. Intending purchasers should not rely on them as statements of representation of fact, but must satisfy themselves by inspection or otherwise as to their accuracy. No person in this firm's employment has the authority to make or give any representation or warranty in respect of the property.