



10 Crown Green Mews Pellatt Road

, Wembley, HA9 8FB

£3,500 Per Month

****FOUR BEDROOM FOUR BATHROOMS OFF PRESTON ROAD**** A Fantastic townhouse in excellent condition throughout ideally located just off Preston Road. The property is within easy reach of a wide range of restaurants, cafés, good schools and open green spaces. Further benefits include off street parking, and is just a short walk providing access to the Metropolitan and Bakerloo Lines. **AVAILABLE TO VIEW NOW.**

- MID TERRACE TOWN HOUSE
- FOUR BEDROOMS
- FOUR BATHROOMS
- LARGE RECEPTION ROOM
- KITCHEN DINER
- SECLUDED REAR GARDEN
- OFF ROAD PARKING
- OFF PRESTON ROAD
- METROPOLITAN/BAKERLOO LINES NEARBY
- AVAILABLE NOW

Viewing

Please contact our Bryan Maher & Co Office on 020 8904 8904 if you wish to arrange a viewing appointment for this property or require further information.



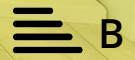
4



4



1



B

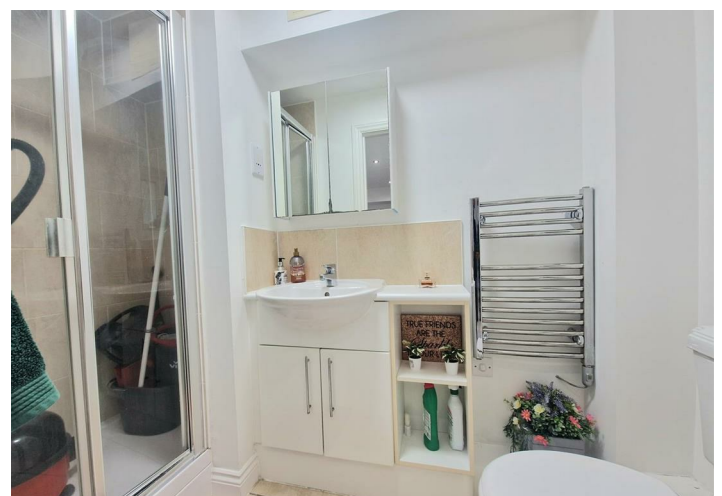
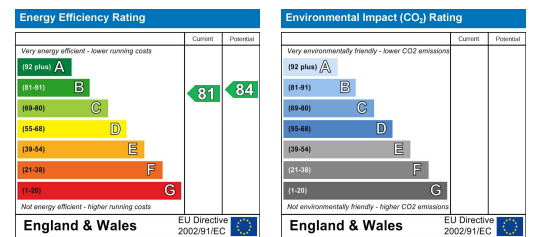
Floor Plan



Area Map



Energy Efficiency Graph



These particulars, whilst believed to be accurate are set out as a general outline only for guidance and do not constitute any part of an offer or contract. Intending purchasers should not rely on them as statements of representation of fact, but must satisfy themselves by inspection or otherwise as to their accuracy. No person in this firm's employment has the authority to make or give any representation or warranty in respect of the property.

