



## 76 The Paddocks

, Wembley, HA9 9HJ

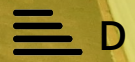
### £1,950 Per Month

**\*\*TWO DOUBLE BEDROOM FLAT WITH GARAGE IN WEMBLEY PARK\*\*** A large first floor flat in a prime location. The property is conveniently positioned within close proximity to highly regarded Schools including the Lycée International de Londres Winston Churchill, local buses, tube stations including Wembley Park Metropolitan & Jubilee lines, Fryent Country Park and the London Designer Outlet offering an array of popular shops & restaurants. Major road networks are close by including the A406, A40, the M1.

- PURPOSE BUILT FLAT
- TWO DOUBLE BEDROOMS
- UTILITY ROOM
- BALCONY
- WEMBLEY PARK
- NEW CARPETS
- FIRST FLOOR
- GARAGE

#### Viewing

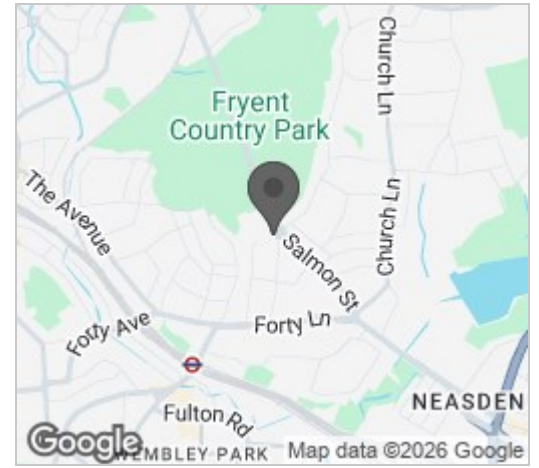
Please contact our Bryan Maher & Co Office on 020 8904 8904 if you wish to arrange a viewing appointment for this property or require further information.



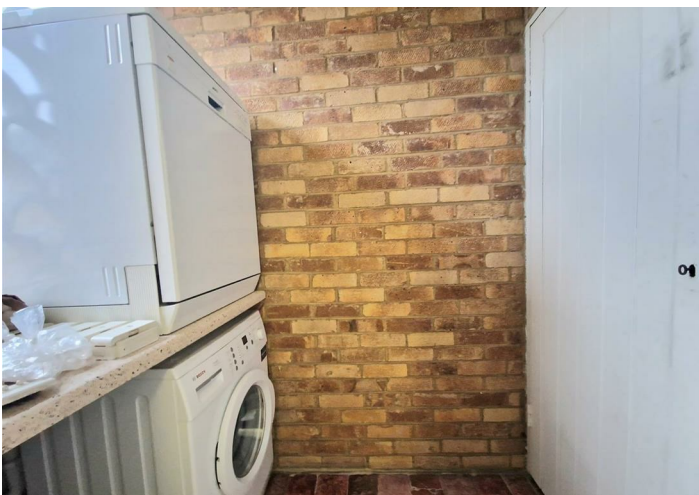
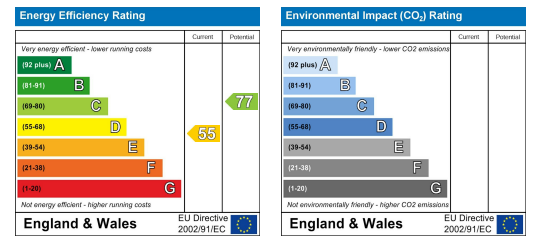
# Floor Plan



# Area Map



# Energy Efficiency Graph



These particulars, whilst believed to be accurate are set out as a general outline only for guidance and do not constitute any part of an offer or contract. Intending purchasers should not rely on them as statements of representation of fact, but must satisfy themselves by inspection or otherwise as to their accuracy. No person in this firm's employment has the authority to make or give any representation or warranty in respect of the property.

