



## 66C Wembley Park Drive, Wembley, HA9 8HB

\* ONE OF THE LARGEST ONE BEDROOM FLATS WE EVER HAVE SEEN IN WEMBLEY PARK\* We are delighted to bring to the market this unique one bedroom flat which is being sold with no onward chain. Internally, this spacious property is offered in excellent condition throughout and benefits from your own section of the rear garden, along with allocated off street parking to the rear.

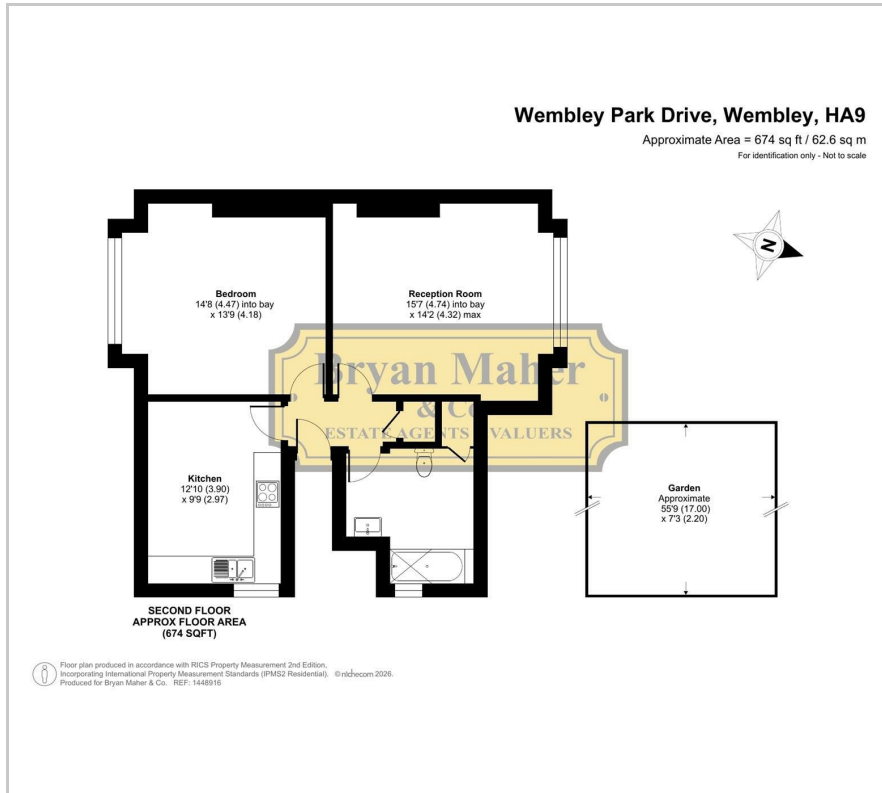
Briefly, this superb property consists of a communal hallway leading to your inner hallway, a large modern fitted kitchen, a spacious front facing lounge, a huge double bedroom and a three piece bathroom. There is fitted storage in the hallway and a loft hatch offers access to additional storage above.

Wembley Park is in the midst of a major regeneration programme at present, attracting professionals & investors from far & wide. The property is conveniently positioned within a short distance to Wembley Park Metropolitan & Jubilee line tube station along with the new London Designer Outlet, offering an array of popular shops, restaurants & entertainment. Major road networks close by include the A406, the A40, the M1 & the A1.

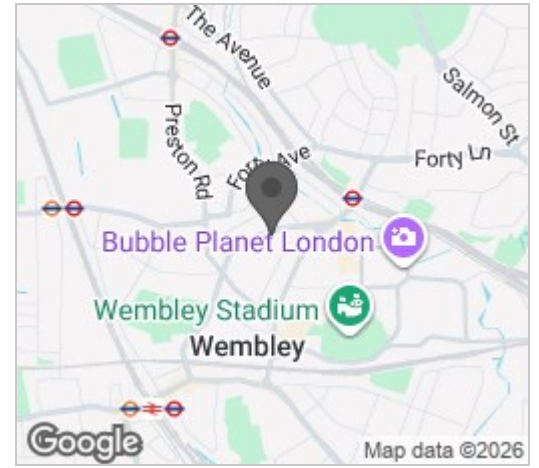
- EXTREMELY SPACIOUS ONE BEDROOM FLAT
- PRIME WEMBLEY PARK LOCATION
- LARGE MODERN FITTED KITCHEN
- HUGE FRONT FACING LOUNGE
- MINIMAL SERVICE CHARGE & GROUND RENT
- OWN SECTION OF THE REAR GARDEN
- ALLOCATED PARKING TO THE REAR
- WALKING DISTANCE TO THE MET' & JUBILEE LINE TUBE
- PERFECT INVESTMENT OR FIRST TIME PURCHASE
- CHAIN FREE SALE

**£299,950**

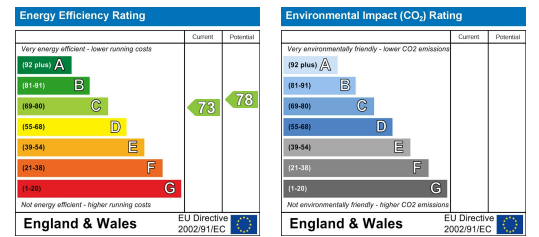
# Floor Plan



# Area Map



# Energy Efficiency Graph



These particulars, whilst believed to be accurate are set out as a general outline only for guidance and do not constitute any part of an offer or contract. Intending purchasers should not rely on them as statements of representation of fact, but must satisfy themselves by inspection or otherwise as to their accuracy. No person in this firm's employment has the authority to make or give any representation or warranty in respect of the property.

