



24 West Hill, Wembley, Middlesex, HA9 9RS

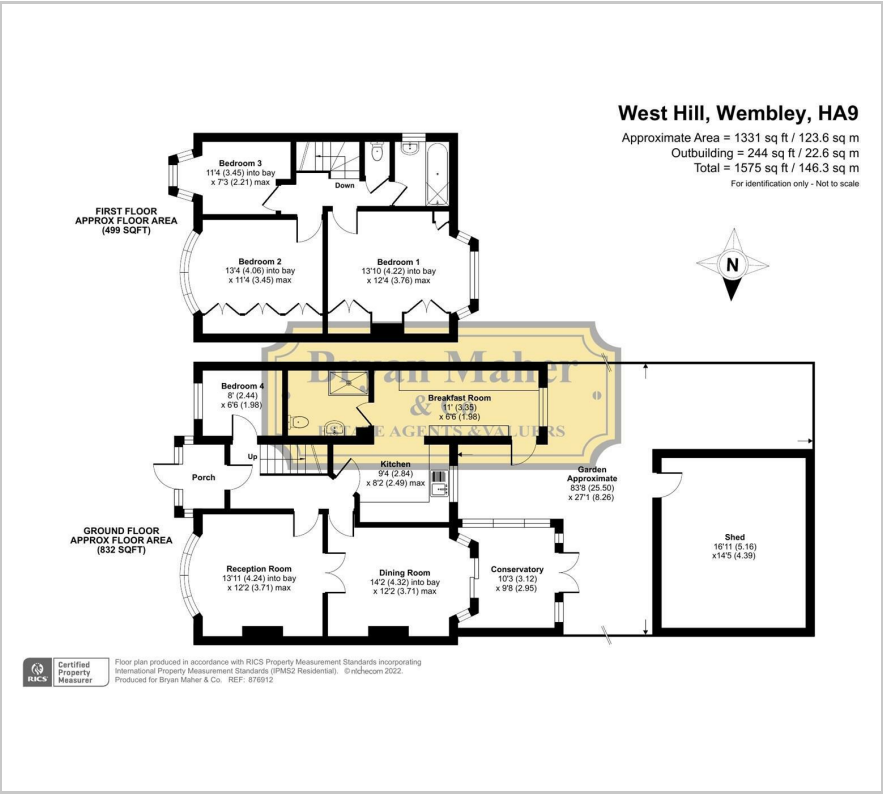
* A FOUR BEDROOM, TWO BATHROOM, EXTENDED FAMILY HOME IN THE BARN HILL ESTATE* We are delighted to have been favoured with instructions to bring to the market this well presented semi detached property positioned in a prime spot offering peaceful woodland walks around Fryent Country Park and also within close proximity to the Metropolitan line tube station.

Internally the property briefly comprises of a welcoming entrance hall, a large extended kitchen, two interconnecting reception rooms, a conservatory, a downstairs bedroom, a downstairs shower room, three first floor bedrooms and a family bathroom. Externally the front provides off street parking and there is a generous garden to the rear which would be perfect for kids & entertaining.

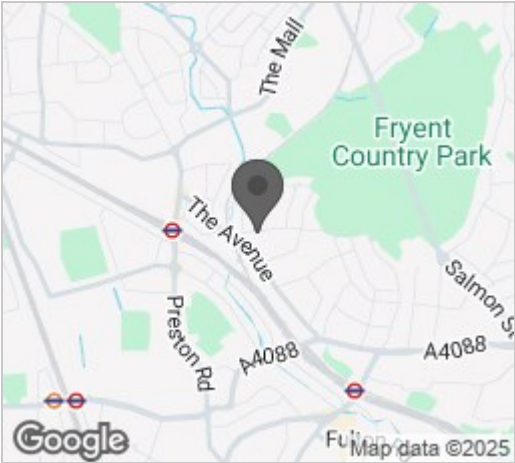
- FOUR BEDROOM
- SEMI DETACHED FAMILY HOME
- TWO BATHROOMS
- THROUGH LOUNGE
- CONSERVATORY
- LARGE GROUND FLOOR EXTENSION
- WONDERFUL REAR GARDEN
- OFF STREET PARKING
- SOUGHT AFTER LOCATION
- CLOSE TO THE METROPOLITAN LINE TUBE

Best Offers Around £699,950

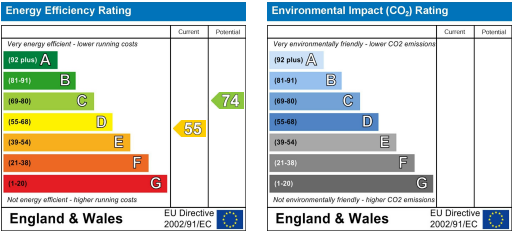
Floor Plan



Area Map



Energy Efficiency Graph



These particulars, whilst believed to be accurate are set out as a general outline only for guidance and do not constitute any part of an offer or contract. Intending purchasers should not rely on them as statements of representation of fact, but must satisfy themselves by inspection or otherwise as to their accuracy. No person in this firms employment has the authority to make or give any representation or warranty in respect of the property.