



40 Wenlock Road, Edgware, Middlesex, HA8 9JF

A STUNNING FOUR DOUBLE BEDROOM, TWO BATHROOM GATED FAMILY HOME We are delighted to have been favoured with instructions to bring to the market this magnificent corner property located within easy reach of shops, amenities, schools and transport links.

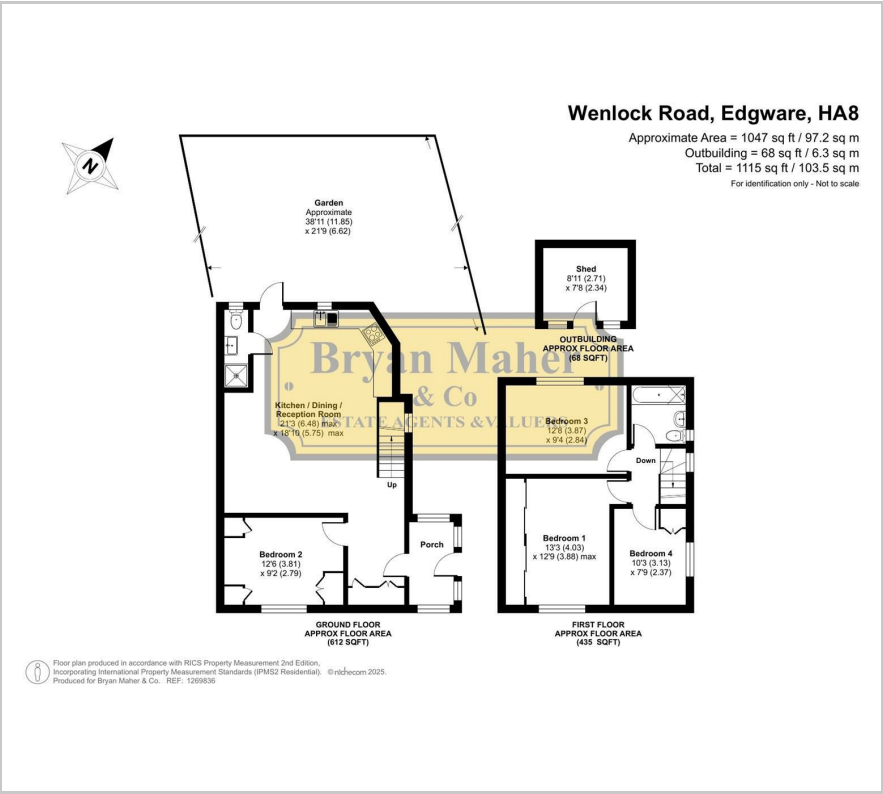
The property briefly comprises of a large enclosed seated porch leading to the inner hallway with floor to ceiling fitted cupboards, a large open plan lounge with underfloor heating leading to a modern kitchen area, a modern ground floor shower room, a ground floor double bedroom with fitted wardrobes, three further first floor double bedrooms, two of which also benefitting from fitted wardrobes and a modern family bathroom.

Externally, the front of property benefits from secure electric gated parking along with an additional open parking space and the rear garden is paved for easy maintenance.

- STUNNING FAMILY HOME
- FOUR DOUBLE BEDROOMS
- TWO BATHROOMS
- EXTENDED TO THE REAR
- OPEN PLAN KITCHEN/LIVING ROOM
- UNDER FLOOR HEATING
- FITTED WARDROBES
- LARGE SEATED PORCH
- LARGE COMMANDING CORNER PLOT
- ELECTRIC GATED OFF STREET PARKING

£599,950

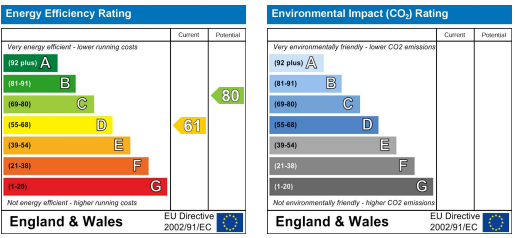
Floor Plan



Area Map



Energy Efficiency Graph



These particulars, whilst believed to be accurate are set out as a general outline only for guidance and do not constitute any part of an offer or contract. Intending purchasers should not rely on them as statements of representation of fact, but must satisfy themselves by inspection or otherwise as to their accuracy. No person in this firms employment has the authority to make or give any representation or warranty in respect of the property.