



Flat 28 Gayton Court

Sheepcote Road, HARROW, HA1 2HD

£299,950

AN EXTREMELY SPACIOUS TWO BEDROOM FIRST FLOOR FLAT WITH PARKING We are delighted to have been favoured with instructions to bring to the market this excellent purpose built flat conveniently located for Harrow Shopping Centre, Harrow tube station and Wealdstone London Overground station. This chain free property briefly comprises of a welcoming entrance hall with wood flooring, a fitted kitchen, a large dual aspect lounge, two bedrooms and a family bathroom. Further benefits include a secure communal entrance, parking with a purchased permit and well maintained communal gardens.

- PURPOSE BUILT FLAT
- TWO BEDROOMS
- LARGE LOUNGE
- SEPERATE KITCHEN
- HARROW TOWN CENTRE
- METROPOLITAN LINE
- OVERGROUND STATION
- BAKERLOO LINE
- PARKING
- LONG LEASE

Viewing

Please contact our Bryan Maher & Co Office on 020 8904 8904 if you wish to arrange a viewing appointment for this property or require further information.



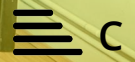
2



1

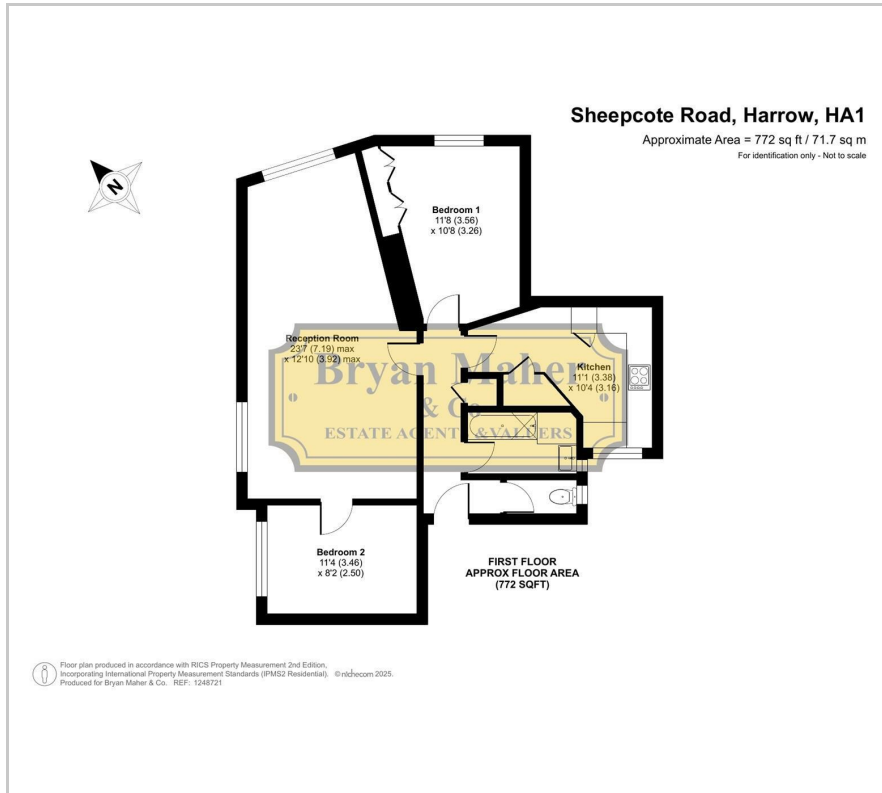


1



C

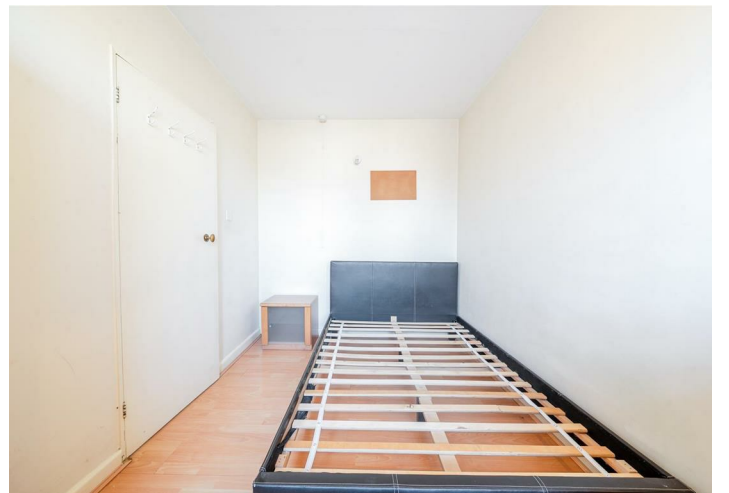
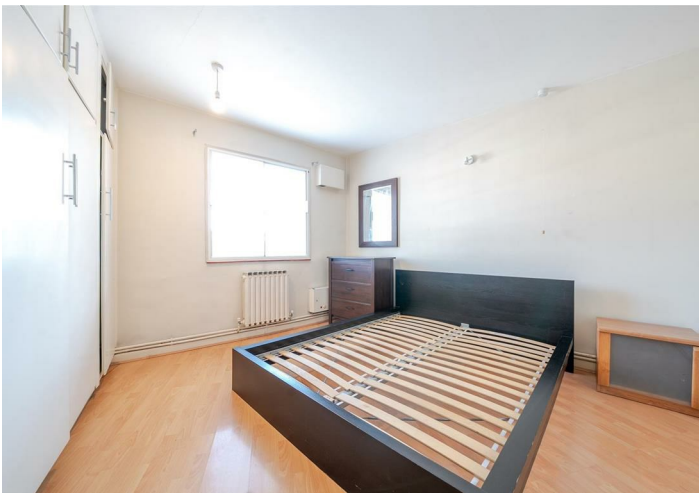
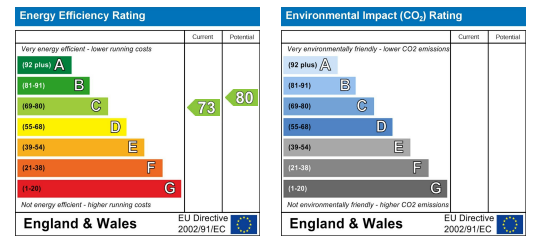
Floor Plan



Area Map



Energy Efficiency Graph



These particulars, whilst believed to be accurate are set out as a general outline only for guidance and do not constitute any part of an offer or contract. Intending purchasers should not rely on them as statements of representation of fact, but must satisfy themselves by inspection or otherwise as to their accuracy. No person in this firm's employment has the authority to make or give any representation or warranty in respect of the property.

