



## 10 Queenscourt, WEMBLEY, Middlesex, HA9 7QU

**\*A MAGNIFICENT FOUR BEDROOM, THREE RECEPTION, FAMILY HOME\*** We are delighted to have been favoured with instructions to bring to the market this superb semi detached property located within close proximity to the London Designer Outlet, benefitting from an array of popular shops, restaurants & family activities. The property offers an abundance of potential, benefitting from a wide side plot which could be significantly extended subject to the usual consents being obtained.

Internally the property briefly comprises of a large welcoming entrance hallway, a downstairs W/C, a front reception room with an interconnecting rear reception room, a separate dining room which leads through to a fitted kitchen and a side storage room, four bedrooms and a family bathroom with a further separate W/C.

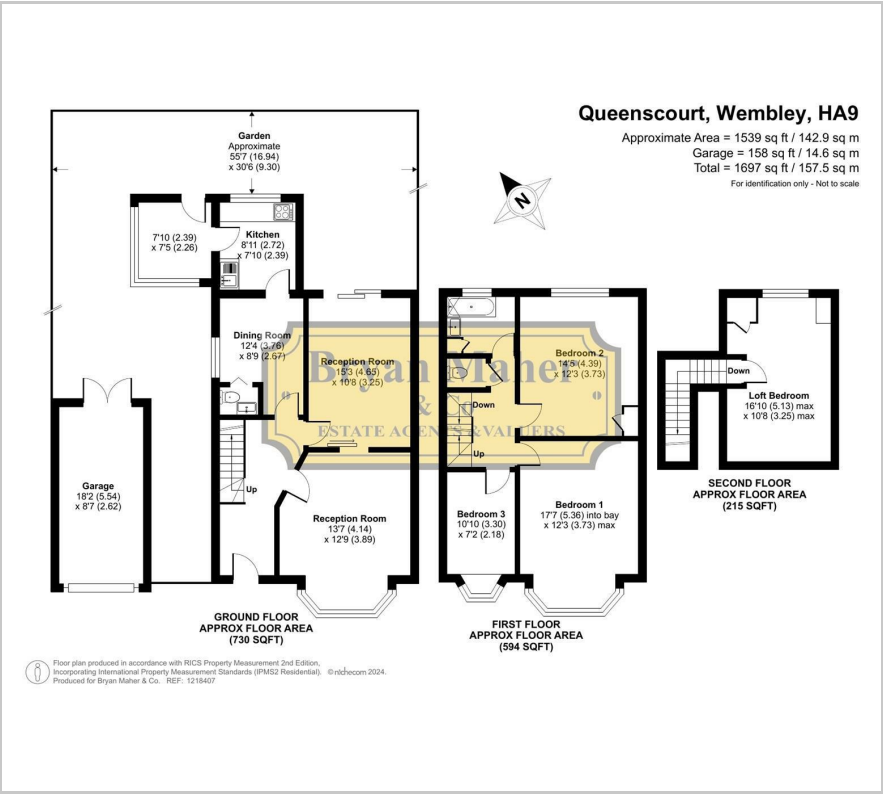
Externally you will benefit from off street parking to the front which leads to the detached garage on the side and a well stocked garden to the rear.

We strongly anticipate huge demand for this superb family home, so an early viewing is strongly advised to avoid disappointment.

- MAGNIFICENT FOUR BEDROOM FAMILY HOME
- THREE RECEPTION ROOMS
- LARGER STYLE SEMI DETACHED
- OFF STREET PARKING & DETACHED GARAGE
- AMAZING POTENTIAL FOR SIDE EXTENSION STPP
- DOWNSTAIRS W/C
- CLOSE TO THE LONDON DESIGNER OUTLET
- HIGHLY SOUGHT AFTER LOCATION

**£739,950**

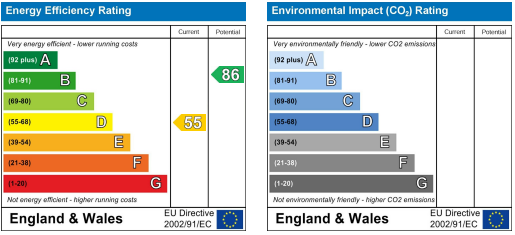
Floor Plan



Area Map



Energy Efficiency Graph



These particulars, whilst believed to be accurate are set out as a general outline only for guidance and do not constitute any part of an offer or contract. Intending purchasers should not rely on them as statements of representation of fact, but must satisfy themselves by inspection or otherwise as to their accuracy. No person in this firms employment has the authority to make or give any representation or warranty in respect of the property.