



Hatchland Road, Exeter, EX4 0AS

Nestled on Hatchland Road in the charming village of Poltimore near Exeter, this delightful detached house offers a perfect blend of comfort and convenience. With three well-proportioned bedrooms, including a conveniently located bedroom on the ground floor, this property is ideal for families or those seeking single-level living.

The property features a spacious reception room, providing a welcoming space for relaxation and entertaining. The two bathrooms ensure that there is ample convenience for both residents and guests alike. The property can be offered either furnished or unfurnished, allowing you the flexibility to make it your own.

One of the standout features of this home is the low maintenance garden, which provides a serene outdoor space without the burden of extensive upkeep. This is perfect for those who wish to enjoy the outdoors without the hassle of constant gardening. Additionally, the property boasts ample parking, making it easy for you and your visitors to come and go with ease.

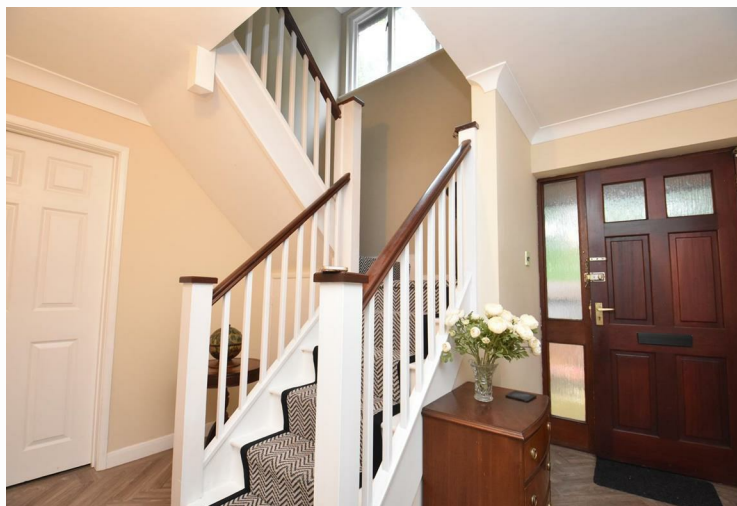
Situated with great access to the north of Exeter, this property is well-positioned for those who need to commute or wish to explore the vibrant city and its surrounding areas.

£1,500 PCM



- Council Tax Band: E
- Deposit: £1730
- Available for a couple of years
- Great access to the north of Exeter
- Village Location
- Parking
- Garage
- Low maintenance garden
- Oil Central Heating
- Internet included in rent





11 High Street
Cullompton
Devon
EX15 1AB
T: 01884 33333
After Hours: 07802 448363
E: enquiries@thornecarterandaspen.co.uk

These particulars are intended as a general guide only and do not form any part of a contract. Every effort has been made to ensure that they are fair and accurate, however, if you have any uncertainty then please contact our offices for clarification